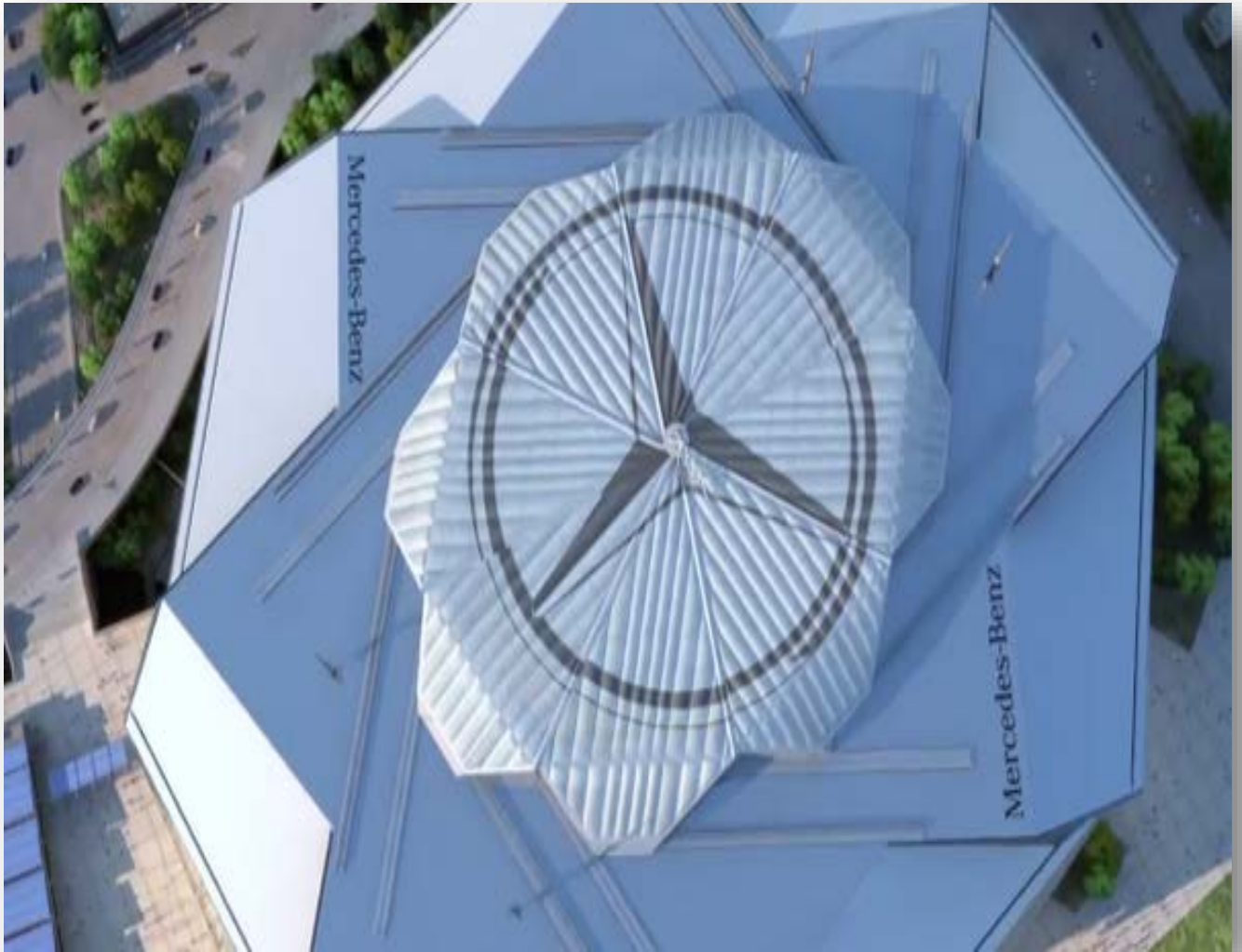


Mercedes-Benz Stadium Project



Presented by:



Mercedes-Benz Stadium Project

INTRODUCTION

This Executive Summary has been prepared to provide highlights of the Equal Business Opportunity activities and accomplishments that have occurred from contract inception through 31 January 2017, and to illustrate the progress made toward the M/FBE goal of 31% participation on the construction of the Atlanta Falcons Mercedes-Benz Stadium (“MB Stadium”).

As illustrated on the following pages, currently \$356,275,894 of the total MB Stadium contract value has been commissioned to M/FBE firms. This figure comprises the total contract dollars awarded to M/FBEs for the entire scope of the project, which includes the development, design, and construction phases of the stadium. Of the total dollars commissioned to M/FBEs, \$303,207,897 has been paid through 31 January 2017, to the firms awarded. As of the close of the fourth quarter of 2016, M/FBE participation on the MB Stadium was at 36% of the total contract.



Mercedes-Benz Stadium Project



PARTNERSHIPS FOR SUCCESS

This segment highlights success stories that have occurred since the Mercedes-Benz Stadium construction began. It illustrates what can happen when opportunity, coupled with diligence and a strong desire to learn, combine and lead to win-win collaborations for all parties involved. This report features partner:

Eagle Security Services, LLC



Eagle Security Services, LLC



www.eaglesecurityllc.com

co-owners:

Cassandra Hubbard

Jerome Hubbard

Eagle Security Services LLC (“Eagle Security”) is a City of Atlanta certified African-American MBE. Its offices are in downtown Atlanta and it is owned and operated by Jerome and Cassandra Hubbard. Eagle Security is responsible for providing security services for the temporary office spaces erected for the Mercedes-Benz Stadium (“MBS”) and at the stadium’s construction site.

With a project of MBS’s scope and magnitude it is not surprising that by the time the stadium is complete hundreds of companies will have played a role in achieving its build. Those companies with have had roles at varying times of development and their involvement may have been limited to certain phases of construction. It seems fitting then, that as Mercedes-Benz Stadium enters its final countdown to completion, that a firm that has been there from the very beginning of the stadium’s conception be recognized for the quality service that it provides. That is where Eagle Security comes in. That is also how Eagle Security cements its place in MBS history as being one of the very first companies to come on board and as one of the companies that will have been a part of the process from the very beginning through to the end when MBS goes live in just a few short months.

Eagle Security’s co-founder Jerome Hubbard described the experience of being a part of MBS’s construction as, “almost like watching kids grow.” Eagle Security has certainly seen it all: from the initial demolition that was necessary to put MBS stakes firmly into the ground to the final demolition that will take place to close out the process -- and all that will have been in between. Eagle has been there for every major phase of MBS’s construction and the emotion that comes with that has not been lost on Mr. Hubbard who pointed out that it, “was, and is, exciting watching it from the ground up.”



Eagle Security Services LLC employs approximately 50 people, of which at least 10% are dedicated solely to the MBS site. It has been serving the Atlanta metro area since its inception in 2001. With that many years of experience in the private security business Mr. Hubbard certainly has seen many things, and yet the awe in his voice is obvious as he speaks of how he remembers being able to “walk straight across the site” and how now he could almost get lost traversing MBS’s landscape.

Being a part of the MBS experience also has special meaning for the owners of Eagle Security because they have a son who plays football and who has played special teams for an NFL team in the past. Mr. Hubbard reflected on how great it would be to see his son playing in the Mercedes-Benz Stadium and that regardless of how that turns out, he looks forward to MBS being the stadium that sets the standard that he will use to measure all others.

Like so many other firms that have worked on the Mercedes-Benz Stadium, Eagle Security has its own unique story and history that shaped how it became a part of the MBS experience, and Eagle Security has its own unique way that it has been impacted by the experience of working of the MBS project. But there is one sentiment that Eagle Security and all those attached to this project seem to have in common -- and Jerome Hubbard summed it up nicely: “It’s unbelievable to be a part of something that *provides so much* to the community and *so much* to the fans.”

Mercedes Benz Stadium couldn’t have said it any better, Eagle Security.

MISSION

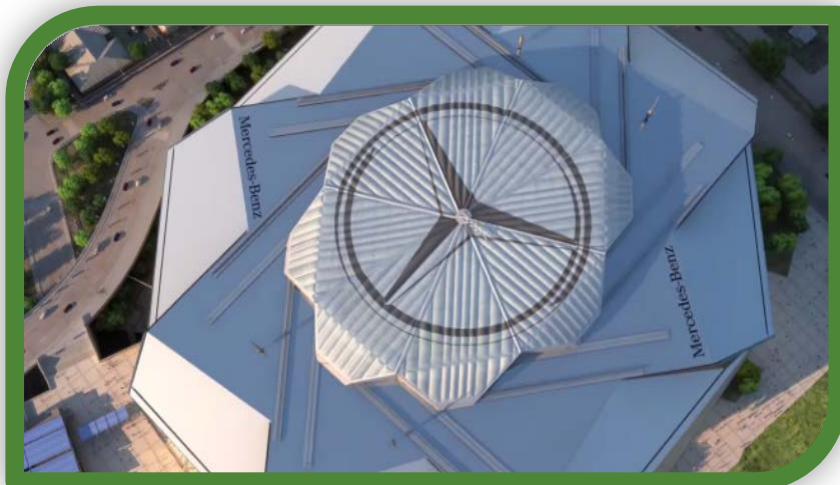
PURPOSE

VISION

Mercedes-Benz Stadium Project

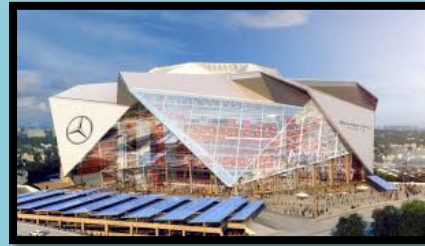
PAYMENT STATUS SUMMARY

| PAYMENT SUMMARY STATUS | AABE | FBE | REMAINING EBO'S | TOTAL |
|-------------------------|-------------|-------------|-----------------|---------------|
| Total Contract Value | | | | \$988,454,840 |
| M/FBE Committed dollars | 152,461,361 | 161,436,958 | 41,605,285 | \$356,275,894 |
| M/FBE Paid to Date | | | | \$303,207,897 |
| % committed to MFBE's | | | | 36.0% |
| Total Project % GOAL | | | | 31% |



EBO Summary #15

Committed EBO Contracts and Amounts Paid To-Date



PAYMENT STATUS SUMMARY

| | | | | AABE | FBE | Remaining EBOs | | TOTAL |
|-------------------------|--|--|--|---------------|---------------|----------------|--|---------------|
| Total Contract Value | | | | | | | | \$988,454,840 |
| M/FBE Committed Dollars | | | | \$152,461,361 | \$161,457,997 | \$42,356,536 | | \$356,275,894 |
| M/FBE Paid To-Date | | | | | | | | \$303,207,897 |
| % Committed to MFBE's | | | | | | | | 36.0% |
| Total Project % Goal | | | | | | | | 31% |

| Scope of Work | Contractor Name | Contract Value | | | Total EBO Contract Amount To-Date | | | |
|---------------------------------------|-------------------------------------|----------------|--|-----------|-----------------------------------|-------------|--|----------------|
| | | | | AABE | | FBE | | Remaining EBOs |
| Drilled Piers | ABE | \$ 9,066,904 | | | | | | |
| | Anasteel & Supply | | | | | \$1,528,512 | | |
| | Capital City Machine Shop | | | \$262,866 | | * | | |
| | Ram Tool and Supply | | | | | \$22,514 | | |
| | S. A. White Oil Company | | | | | \$133,418 | | |
| Specialties | Accessories Unlimited, Inc. | \$ 5,897,767 | | | | | | |
| | Pinnacle Service Grp., Inc. | | | | | | | \$2,948,884 |
| Overhead Doors / Loading | Acousti Doors and Specialist | \$ 862,671 | | | | | | |
| Drywall and Acoustal Work Below 1061' | Acousti Engineering | \$ 20,007,141 | | | | | | |
| | Alpha Insulation & Waterproof | | | | | | | \$3,681,614 |
| | AP Drywall | | | | | | | \$900,000 |
| | J.S. 82 Construction Group | | | | | | | \$1,808,063 |
| | Level Construction Srvs. | | | \$910,688 | | | | |
| | Manpower Resources | | | | | | | \$833,551 |
| GA Dome Demolition | Adamo Group | \$ 14,625,000 | | | | | | |
| | TBD | | | | | | | \$731,250 |

| Scope of Work | Contractor Name | Contract Value | | AABE | Total EBO Contract Amount To-Date | | Remaining EBOs |
|---------------------------------------|--|----------------|--|--------------|-----------------------------------|--------------|----------------|
| | | | | | | FBE | |
| Site Waterproofing | Alpha Insulation and Waterp | \$ 5,158,943 | | | | | \$5,158,943 |
| | | | | | | | |
| Resteel Material | Anasteel and Supply Compa | \$ 1,071,631 | | | | \$1,071,631 | * |
| Resteel Installation | Anatek, Inc. | \$ 746,255 | | | | \$746,255 | * |
| | | | | | | | |
| Concrete Material / Purchase Order | Argos USA Ready Mix | \$ 1,097,903 | | | | | |
| | | | | | | | |
| | | | | | | | |
| Asphalt Paving | Atl. Paving and Concrete Cor | \$ 306,117 | | | | | \$306,117 |
| | | | | | | | |
| | | | | | | | |
| Mechanical & Plumbing | Atlanta Stadium Partners, A Joint Venture | \$ 134,149,905 | | | | | |
| | Alpha Insulation/Wtrprfg. | | | | | | \$152,519 |
| | Amin Sheet Metal | | | \$1,151,065 | | | |
| | ARS (JV Partner) | | | \$6,042,091 | | | |
| | ARS (Self-Performed Work) | | | \$13,040,464 | | | |
| | Atlanta Communications | | | \$15,565 | | | |
| | Boyette Brothers Company | | | | | \$150,000 | |
| | Contract Business Interiors | | | \$20,405 | | | |
| | Eastern Power Technologies, Inc. | | | | | \$910,000 | |
| | F & S Mechanical | | | | | \$23,605,938 | |
| | Golden Insulation | | | \$8,042 | | | |
| | H & R Commerical Flooring | | | | | \$8,495 | |
| | Peachtree Mechanical | | | | | \$3,585,851 | |
| | Precision Layout and Design | | | | | | \$250,000 |
| | Southside Street Metal | | | \$4,745,413 | | | |
| | Vulcan Industrial | | | | | \$4,101,856 | |
| | | | | | | | |
| Auger Cast Piles | Berkel | \$ 7,987,314 | | | | | |
| Trucking | Amercon Construction Group | | | | | \$39,882 | |
| | Anasteel | | | | | \$2,448 | |
| Steel | Anatek | | | | | \$982,132 | |
| Miscellaneous Material | Im Tool and Supply Company | | | | | \$3,935 | |
| Trucking | SAWA Transportation | | | \$159,497 | | | |
| Fuel | S.A. White Oil Company | | | | | \$33,703 | |
| | | | | | | | |

| Scope of Work | Contractor Name | Contract Value | | | Total EBO Contract Amount To-Date | | | Remaining EBOs |
|--|----------------------------------|----------------|--|--------------|-----------------------------------|-------------|--|----------------|
| | | | | | AABE | FBE | | |
| Sheeting and Shoring | Berkel | \$ 853,046 | | | | | | |
| Steel | Anasteel | | | | | \$223,348 | | |
| | Ram Tool and Supply Co. | | | | | \$668 | | |
| General Requirements | Brand Energy Solutions, LLC | \$ 800,778 | | | | | | |
| Hardscape/Landscape/Irrigation | Brightview (formerly Valleyco) | \$ 5,744,800 | | | | | | |
| | Green Hills Landscaping | | | | | | | \$916,987 |
| | Limitless Concrete & Works, Inc. | | | | | | | \$1,124,640 |
| | Ram Tool and Supply | | | | | \$80,000 | | |
| Moisture Mitigation and Industrial Hygiene Consultatnt | Building Dynamics, LLC | \$ 116,190 | | | | | | |
| | C.M. Steel, Inc. | \$ 54,625 | | | | | | |
| Structural Steel Roof-Design Assist | Canam Steel Corporation | \$ 30,783,733 | | | | | | |
| | ADG Enterprises, Inc. | | | \$76,950 | | * | | |
| | Amer.Custom Manufacturing | | | \$3,147,055 | | | | |
| | Bennett Logistics | | | | | \$5,698,951 | | |
| | Champion Painting | | | | | | | \$4,371,102 |
| | Ryjohn Steel | | | \$75,642 | | | | |
| Waterproofing / Caulking / Expansion Joints | Chambliss Const. Specialist, | \$ 2,858,733 | | | | | | |
| | Level Construction | | | \$1,265,000 | | | | |
| | TCM Waterproofing | | | | | \$175,000 | | |
| Final Cleaning (Interior) | Construction Clean-Up Specia | \$ 922,250 | | | | \$922,250 | | |
| Interior Masonry | Cornerstone Masonry Group | \$ 10,898,564 | | | | | | |
| | Anasteel Supply | | | | | \$1,200,000 | | |
| | TCM LLC | | | | | \$2,190,954 | | |
| Admin Offices - Demounta | Corporate Enviornments | \$ 345,945 | | | | \$345,945 | | |
| Exterior Enclosure | Crown Corr | \$ 51,792,857 | | | | | | |
| | Bennett International Logistics | | | | | \$12,013 | | |
| | C & K United Sheet Metal | | | \$11,574,294 | | * | | |

| Scope of Work | Contractor Name | Contract Value | | | Total EBO Contract Amount To-Date | | Remaining EBOs |
|---|------------------------------------|----------------|--|-------------|-----------------------------------|-----|----------------|
| | | | | | AABE | FBE | |
| | EGM | | | \$6,874,592 | * | | |
| | Exterior Metal Services | | | | \$1,160,000 | | |
| | TCM Waterproofing | | | | \$175,000 | | |
| Resinous Flooring | CSS Coatings | \$ 1,523,553 | | | | | |
| | REU Renovations, LLC | | | \$492,854 | * | | |
| Switch Back Ramp Demolition | D. H. Griffin Wrecking Comp | \$ 531,453 | | | | | |
| | Kelly Construction Company | | | \$32,824 | | | |
| | Knight Steel, Inc. | | | \$3,778 | | | |
| GA Dome Utilities, Erosion Control, NSP Site Demo (Incl. Mt Vernon) | Dennis Taylor | \$ 1,722,441 | | | | | |
| | C & C Fence | | | | \$2,783 | | |
| | Cornerstone Demolition | | | | \$551,670 | | |
| Demolition | Southern Site Development | | | | | | \$195,000 |
| Ornamental Handrails | Dillion Forge | \$ 233,000 | | | | | |
| Web Cameras | Earthcam | \$ 101,759 | | | | | |
| Fall Arrest Protection Syst | Evan Corporation | \$ 560,000 | | | | | |
| Workforce Screening-Site | F C Background | \$ 238,172 | | | | | |
| IT Equipment, Computers | Flagship Solutions, LLC | \$ 3,012,973 | | | | | |
| Architectural Precast | Gate Precast Erection Compa | \$ 3,573,955 | | | | | |
| | Architectural Precast Solutions | | | | | | \$113,432 |
| | TCM Waterproofing | | | | \$237,730 | | |
| Interior Glass and Glazing | Glass Stream, Inc. | \$ 2,329,167 | | | | | |
| | TCM Waterproofing | | | | | | \$62,000 |
| Paint / Wallcovering | Goodman Decorating Co. | \$ 3,771,406 | | | | | |
| | Commercial Painter's 360 | | | | | | \$1,194,187 |
| Superstructure | HHRM Self Perform | \$ 125,562,789 | | | | | |

| Scope of Work | Contractor Name | Contract Value | | AABE | Total EBO Contract Amount To-Date | | Remaining EBOs |
|-----------------------|--|----------------|--|--------------|-----------------------------------|--|----------------|
| | | | | | FBE | | |
| | Anasteel | | | | \$20,965,351 | | |
| | Anatek | | | | \$10,547,274 | | |
| | Bryson Constructors | | | \$2,785,992 | | | |
| | C. D. Moody Construction | | | \$12,587,520 | | | |
| | C.D. Moody Construction (COW) | | | \$574,209 | | | |
| | Contract Business Interiors | | | | \$1,865 | | |
| | Eagle Safety Supply | | | | \$3,940 | | |
| | Eastern Data | | | | \$22,247 | | |
| | Freeman Forms dba My Supplies | | | | \$6,649 | | |
| | Gunby | | | | \$1,221,533 | | |
| | H.J. Russell | | | \$12,587,520 | | | |
| | H.J. Russell (COW) | | | \$53,403 | | | |
| | Long Engineering | | | | \$276,208 | | |
| | Ram Tool | | | | \$1,047,856 | | |
| | S. A. White | | | | \$76,419 | | |
| | The Printing People | | | | \$105 | | |
| Steel Stairs and Lids | Immec, Inc. | \$ 3,940,635 | | | | | |
| Special Systems | International Business Mach | \$ 51,943,577 | | | | | |
| | Coliant Solutions | | | | \$25,040,482 | | |
| | J & A Engineering | | | | | | \$535,594 |
| Electrical - FOT | Inglett, Cleveland, Uptime (I | \$ 306,384 | | | | | |
| Electrical | Inglett, Cleveland, Uptime (ICU) JV Electric | \$ 77,096,611 | | | | | |
| | B & S Supply | | | \$400,000 | | | |
| | Boyette Brothers Company | | | | \$979,344 | | |
| | Contract Business Solutions | | | \$4,000 | | | |
| | JJ Dal Supply | | | \$100,000 | * | | |
| | Mayer | | | | \$19,151,883 | | |
| | Uptime (JV Partner) | | | \$9,081,037 | * | | |
| | Uptime (Self-performed work) | | | \$9,550,712 | * | | |
| FOT Electrical | Inglett and Stubbs, LLC | \$ 198,084 | | | | | |

| Scope of Work | Contractor Name | Contract Value | | | Total EBO Contract Amount To-Date | | | Remaining EBOs |
|--|--|----------------|--|-----------|-----------------------------------|-------------|--|----------------|
| | | | | | AABE | FBE | | |
| Friendship Baptist Church Demolition and Abatement | Kissberg Construction | \$ 194,220 | | \$194,220 | | * | | |
| | Little Environmental | | | \$10,000 | | | | |
| Elevators | Kone, Inc. | \$ 11,756,923 | | | | | | |
| | Mills Speciality Metals | | | | | \$1,046,645 | | |
| Structural Peer/Consultant | KSI Structural Engineers | \$ 13,065 | | | | | | |
| Graphics and Wayfinding | L & H Signs Inc. | \$ 2,539,618 | | | | | | |
| | C&K United Sheet Metal & Mechanical, Inc. | | | \$325,000 | | | | |
| | JKB, LLC | | | \$239,350 | | | | |
| | Southeast Exhibits and Events, LLC | | | \$239,139 | | * | | |
| Drywall and Acoustical | Marek Interior Systems, Inc. | \$ 21,547,279 | | | | | | |
| | Alpha Insulation & Waterproof | | | | | | | \$7,972,493 |
| Switchback Stair Railing | McPherson Enterprises, Inc. | \$ 149,752 | | | | | | |
| Structural Precast Material | Metromont | \$ 28,457,927 | | | | | | |
| | Anasteel & Supply Company | | | | | \$26,015 | | |
| | Architectural Precast Solns. | | | | | | | \$289,942 |
| | Bryson Constructors Inc. | | | \$157,140 | | | | |
| Canopy Composite Metal Panels | Miller-Clapperton Partnership, Inc. | \$ 102,525 | | | | | | |
| Millwork | Mortensen Woodwork, Inc. | \$ 14,602,774 | | | | | | |
| | M. Garcia and Sons | | | | | | | \$3,550,787 |
| Interior Progressions | Multivista | \$ 273,478 | | | | | | |
| Admin Offices - Drywall/A | NES Drywall and Acoustic | \$ 878,996 | | | | | | |
| | Alpha Insulation and Waterproofing | | | | | | | \$148,925 |
| Plaza Pile Caps & First Lift of Columns, West Side | New Gen Construction, LLC | \$ 703,525 | | \$703,525 | | | | |
| Fire Protection | Northstar Fire Protection of | \$ 8,598,757 | | | | | | |
| | Alzan Services, LLC | | | \$71,469 | | * | | |

| Scope of Work | Contractor Name | Contract Value | | | Total EBO Contract Amount To-Date | | | Remaining EBOs |
|--------------------------------|-------------------------------|----------------|--|-------------|-----------------------------------|-------------|--|----------------|
| | | | | | AABE | FBE | | |
| | ARS Mechanical | | | \$2,619,437 | | | | |
| | Precision Layout and Design | | | | | | | \$6,165 |
| Accordion Fire Doors | Overhead Door Co. of Atlant | \$ 348,869 | | | | | | |
| Civil Engineer - Roadways | Parsons Brinckerhoff | \$ 2,634,798 | | | | | | |
| Surveyor & Utility Design | Long Engineering | | | | | \$520,073 | | |
| Site Lighting | iams, Russell, Johnson (WRJ) | | | \$193,788 | | | | |
| Roofing | Porter Roofing Contractors, | \$ 9,240,004 | | | | | | |
| | Ram Tool | | | | | \$925,452 | | |
| Shallow Foundation/ First Lift | Precision Concrete Construct | \$ 28,156,584 | | | | | | |
| | Anatek | | | | | \$4,125,590 | | |
| | Grier Brothers | | | \$170,804 | | | | |
| | Ram Tool | | | | | \$225,149 | | |
| | Technique Concrete | | | \$8,523,421 | | | | |
| AASHTO Girder Installation | Precision Stone Setting Co. | \$ 61,666 | | | | | | |
| Admin Offices - Electrical | Putzel Electrical Contractors | \$ 1,335,419 | | | | | | |
| | B & S Electrical | | | \$195,013 | | | | |
| | GC Electrical Solutions | | | \$502,320 | | | | |
| Exterior Masonry | Pyramid Masonry | \$ 856,738 | | | | | | |
| | Meadows Construction | | | \$250,720 | | | | |
| Railings | Raydeo Enterprises, Inc. | \$ 10,881,583 | | | | | | |
| | Eddie's Welding | | | \$202,000 | | | | |
| | Remediation Group, Inc. | | | | | | | \$2,341,856 |
| Contractor (Mangum Street) | Reeves Young, LLC | \$ 3,208,311 | | | | | | |
| Asphalt | Atlanta Paving | | | | | | | \$270,000 |
| Fencing | C & C Fence | | | | | \$30,935 | | |
| Erosion Control | Clean Water Consultants | | | | | \$2,084 | | |
| Trucking | Grier Brothers | | | \$101,000 | | | | |
| Trucking | Harrell Hauling Inc. | | | \$190,193 | | * | | |
| Markings & Signage | Highway Services | | | | | \$32,984 | | |

| Scope of Work | Contractor Name | Contract Value | | | Total EBO Contract Amount To-Date | | Remaining EBOs |
|---|-----------------------------|----------------|--|-------------|-----------------------------------|-------------|----------------|
| | | | | | AABE | FBE | |
| Trucking | MAR Trucking | | | \$5,000 | | | |
| Trucking | MC Trucking | | | \$26,158 | | | |
| Electrical | ME Contractors | | | | \$28,646 | | |
| Trucking | Navigators Construction | | | \$5,874 | | | |
| Traffic Control | The Corbett Group | | | \$280,000 | | | |
| Mass Excavation and Site Grading | Reeves Contracting Co. | \$ 18,777,736 | | | | | |
| Shoring | American Shoring | | | | 319,952 | | |
| Paving | Atlanta Paving | | | | | | \$138,880 |
| Trucking | Grier Brothers | | | \$134,135 | | | |
| Trucking | Harrell Hauling Inc. | | | \$2,734,000 | * | | |
| Engineering | Long Engineering | | | | \$19,368 | | |
| Trucking | MAR Trucking | | | \$15,640 | | | |
| Trucking | MC Trucking | | | \$46,020 | | | |
| Construction of the vault | NewGen | | | \$1,460,000 | | | |
| Trucking | R. S. Senter | | | | \$381,295 | | |
| Blasting | Symmetry Rock Drilling | | | | \$35,000 | | |
| Traffic Control | The Corbett Group | | | \$955,106 | | | |
| Roadways Phase II | Reeves Contracting, Inc. | \$ 16,469,328 | | | | | |
| | Anatek | | | | \$2,596,882 | | |
| | Atlanta Paving | | | | | | \$400,000 |
| | Bonn J | | | | \$556,898 | | |
| | Caden Construction Co. | | | \$400,000 | | | |
| | C & C Fence | | | | \$9,000 | | |
| | Harrell Hauling | | | \$450,000 | * | | |
| | Lagniappe Development Co. | | | | \$795,000 | | |
| | NewGen | | | \$600,000 | | | |
| Restaurant Millwork and Ornamental Metals | Scenario Custom Scenery, LL | \$ 300,000 | | | | | |
| Final Cleaning (Exterior) | Sentinel Maintenance | \$ 250,000 | | | | | |
| | TBD | | | | | | \$37,500 |
| Plaza Formwork | Skyline Forming of GA, Inc. | \$ 3,026,613 | | | | | |
| Doors and Frames Material | Southern Door and Plywood | \$ 3,477,872 | | | | \$3,366,582 | |

| Scope of Work | Contractor Name | Contract Value | | AABE | Total EBO Contract Amount To-Date | | Remaining EBOs |
|----------------------------------|--|----------------|--|-------------|-----------------------------------|-------------|----------------|
| | | | | | FBE | | |
| Marquis Sign Demo | Southern Site Development | \$ 45,500 | | | | | \$45,550 |
| Carpet; Resilient and Rubber | Spectra Contract Flooring | \$ 7,437,733 | | | | | |
| | S.L. Gresham Company | | | \$2,742,639 | | | |
| AASHTO Girders - Plaza | Standard Concrete | \$ 1,138,827 | | | | | |
| Canopy Structural Steel | Steel, LLC | \$ 194,900 | | | | | |
| Elevator Steel | Stein Steel and Supply Comp | \$ 2,071,673 | | | | | |
| | American Custom Manufacturing | | | \$1,394,946 | | | |
| Church Demolition | Superior Rigging & Erecting Company | \$ 328,150 | | | | | |
| Consultant Services | Thornton Thomasetti | \$ 550,000 | | | | | |
| Site Security / Fencing | Tusco, Inc. | \$ 3,311,403 | | | | \$3,311,403 | |
| Miscellaneous Steel | Variable Steel Unlimited | \$ 4,064,931 | | \$4,064,931 | | | |
| Millwork/Misc. Metals | WelbornHenson, Inc. | \$ 171,994 | | | | | |
| CIP Aisle Steps | World Dynamics | \$ 1,667,341 | | | | | |
| | Anasteel | | | | | \$55,000 | * |
| | Southern Door and Plywood | | | | | \$65,500 | |
| CONSTRUCTION REQUIREMENTS | | | | | | | |
| Construction Requirements | | \$ 25,654,997 | | | | | |
| Billed Direct | Allstate Waste (CR) | | | | | | \$650,030 |
| Contracted thru Waste Management | Allstate Waste (GC) | | | | | | \$387,500 |
| | Bryson Constructors (CR) | | | \$3,507,719 | | | |
| Fencing | C & C Fence (CR) | | | | | \$520,747 | |
| JV Partner | E.D. Moody Construction (CR) | | | \$1,859,534 | | | |
| | Construction Clean-Up Specialists (CR) | | | | | \$6,153 | |
| | Eagle Safety Supply, Inc. (CR) | | | | | \$135,636 | |
| | Eagle Security (CR) | | | | | \$673,901 | |

| Scope of Work | Contractor Name | Contract Value | | | Total EBO Contract Amount To-Date | | | |
|---------------------------------------|-------------------------------------|----------------|--|-------------|-----------------------------------|-----------|--|----------------|
| | | | | AABE | | FBE | | Remaining EBOs |
| | Eastern Data (CR) | | | | | \$3,985 | | |
| JV Partner | H. J. Russell | | | \$214,530 | | | | |
| | Long Engineering (CR) | | | | | \$923,652 | | |
| | My Supplies (CR) | | | | | \$7,083 | | |
| Consultant Agreement | Oasis Consulting Services, LLC (GC) | | | | | \$26,066 | | |
| | Ram Tools (CR) | | | | | \$455,227 | | |
| Oil/Gasoline Supplier | S.A. White | | | | | \$38,482 | | |
| | The Printing People (CR) | | | | | | | \$3,890 |
| | | | | | | | | |
| INSURANCE, PERMITS, & FEES | | | | | | | | |
| Insurance, Permits | | \$ 12,510,404 | | | | | | |
| JV Partner | H. J. Russell (Bonds) | | | \$598,975 | | | | |
| JV Partner | Moody Construction (Bonds) | | | \$873,984 | | | | |
| Fees | | \$ 24,525,635 | | | | | | |
| JV Partner | H. J. Russell (Bonds) | | | \$2,387,682 | | | | |
| JV Partner | Moody Construction (Bonds) | | | \$2,387,682 | | | | |
| GENERAL CONDITIONS | | | | | | | | |
| | | \$ 49,727,781 | | | | | | |
| | A Action Vending (GC) | | | | | \$13,615 | | |
| | A Action Janitorial (GC) | | | | | \$178,840 | | |
| Photos | Aerial Innovations of GA (GC) | | | | | \$6,951 | | |
| | ARS Mechanical | | | \$4,602 | | | | |
| Moving Services | B & B Movers (GC) | | | | | \$8,091 | | |
| Work Order | Bryson Constructors (GC) | | | \$1,920,829 | | | | |
| Fencing | C & C Fence (GC) | | | | | \$54,419 | | |
| JV Partner | D. Moody Constr. (GC Staff) | | | \$2,594,485 | | | | |
| Office Furniture | Contract Business Interiors (GC) | | | \$140,190 | | | | |
| | Eagle Safety Supply, Inc. (GC) | | | | | \$827 | | |
| Electronics | Eastern Data (GC) | | | | | \$177,491 | | |
| | Exterior Metal Services | | | | | \$21,042 | | |
| JV Partner | H. J. Russell (GC Staff) | | | \$1,731,658 | | | | |
| Office Supplies | My Supplies(GC) | | | | | \$163,629 | | |
| | Ram Tools (GC) | | | \$98,919 | | | | |
| JV Partner | Shumate Mechanical (GC) | | | | | \$86 | | |
| Labor | Staffzone | | | | | \$3,525 | | |
| Printing Services | The Printing People(GC) | | | | | | | \$16,280 |
| | Twelve & Associates (GC) | | | | | \$64,514 | | |
| FOT Landscaping | Widespread Landscaping | | | \$10,270 | | | | |

| Scope of Work | Contractor Name | Contract Value | | | Total EBO Contract Amount To-Date | | Remaining EBOs |
|------------------------------|-----------------------------|----------------|--|---------------|-----------------------------------|---------------|----------------|
| | | | | | AABE | FBE | |
| | | | | | | | |
| TOTAL | | \$905,040,660 | | \$146,157,525 | | \$151,203,453 | \$41,543,681 |
| | | | | | | | |
| DESIGN TEAM | | | | | | | |
| | | | | | | | |
| Architecture - Designer and | HOK, Inc. | \$24,650,928 | | | | | |
| | | | | | | | |
| Architecture - Local | TVS Design | | | | | | |
| Architecture - Local | CNNA | | | | | | |
| Architecture - Local | Stanley Beaman Sears | | | | | \$1,232,065 | |
| | | | | | | | |
| Architecture - Local | Goode Van Slyke | | | \$2,443,114 | | | |
| | | | | | | | |
| Civil Engineering - Prime C | Kimley Horn | \$3,255,467 | | | | | |
| Civil Engineering - Local Te | Long Engineering | | | | | \$381,235 | |
| Civil Engineering - Local Te | Skyline Engineering | | | \$65,675 | | | |
| | | | | | | | |
| Landscape Architecture - P | HGOR | \$483,525 | | | | | |
| Landscape Architecture - L | The Creative Eye, LLC (TCE) | | | \$33,250 | | | |
| Landscape Architecture - L | Centricity, LLC | | | | | \$49,875 | |
| | | | | | | | |
| Structural Engineering - Pr | Buro Happold | \$13,805,595 | | | | | |
| Structural Engineering - Lc | Sykes Consulting | | | \$1,452,860 | | | |
| Structural Engineering - Rd | Unisystems | | | | | | |
| | | | | | | | |
| Mech, Plumb, Elec and FP | WSP Flack & Kurtz | \$4,686,369 | | | | | |
| Mech, Plumb, Elec and FP | SL King | | | \$600,000 | | | |
| | | | | | | | |
| Mech, Plumb, Elec and FP | Khafra | | | \$600,000 | | | |
| | | | | | | | |
| LEED Administration | Ecoworks | \$222,000 | | | | \$222,000 | |
| | | | | | | | |
| A/V | WJHW | \$1,269,624 | | | | | |
| A/V- Local Team Member | J & A Engineering | | | | | | \$574,011 |
| | | | | | | | |
| Field Drainage and Turf De | FTE | \$128,000 | | | | | \$128,000 |
| | | | | | | | |
| Food Service | Ricca Newmark Design (RND | \$253,090 | | | | | |

| Scope of Work | Contractor Name | Contract Value | | | Total EBO Contract Amount To-Date | | Remaining EBOs |
|-----------------------------|------------------------------|----------------|--|-------------|-----------------------------------|-----|----------------|
| | | | | | AABE | FBE | |
| Food Service - Local Team | Comacho Associates | | | | | | \$54,300 |
| Experiential Graphics | TBD | | | | | | |
| Building Codes and Life Sa | FSC | \$331,695 | | | | | |
| Building Codes and Life Sa | RL Brown | | | \$59,000 | | | |
| Accessibility/ADA | United Spinal | \$89,500 | | | | | |
| Accessibility/ADA - Local T | McAfee3 Architects | | | \$22,500 | * | | |
| Vertical Circulation | Lerch Bates | \$95,585 | | | | | |
| Door Hardware | Studio Eight | \$24,950 | | | | | |
| Building Envelope | Heitmann & Associates | \$294,380 | | | | | |
| Building Envelope | Epsten Group | | | | \$38,000 | | |
| Wind Engineering | BMTFM | \$170,000 | | | | | |
| Wind Engineering | RWDI | \$49,000 | | | | | |
| TOTAL | | \$49,809,708 | | \$5,276,399 | \$1,923,175 | | \$756,311 |
| DEVELOPER | | | | | | | |
| | Darden & Company | | | | | | |
| Surveyor | Long Engineering | \$848,872 | | | \$848,872 | | |
| Diversity Coordinator | Griffin & Strong, P.C. | \$340,000 | | \$340,000 | | | |
| Material Tester | NOVA | \$104,878 | | | | | |
| | Materials Mngrs & Eng., Inc. | | | | | | \$33,107 |
| Fundamental Commission | Working Buildings | \$667,120 | | | | | |
| | Smart Building Systems | | | \$3,575 | | | |
| Construction Materials Te | AMEC | \$27,000,000 | | | | | |
| | Tri Tech/Aldridge | | | \$616,362 | | | |

| Scope of Work | Contractor Name | Contract Value | | | Total EBO Contract Amount To-Date | | | |
|--------------------------|-----------------------------|----------------------|--|----------------------|-----------------------------------|----------------------|--|---------------------|
| | | | | AABE | | FBE | | Remaining EBOs |
| | Willmer Engineering Inc | | | | | \$730,000 | | |
| | Dunlop NDT, LLC | | | | | \$5,125,000 | | |
| | | | | | | | | |
| Geotechnical/Environment | Langan | \$3,049,395 | | | | | | |
| | Advanced Analytical Serv. | | | | | \$113,195 | | |
| | Excalibur Drilling | | | | | \$165,573 | | |
| | Contour Engineering | | | | | | | \$23,436 |
| | Oasis Construction Services | | | | | \$28,475 | | |
| | Willmer Engineering | | | | | \$562,599 | | |
| | | | | | | | | |
| Enclosure Peer Review | Morrison Hershfield | \$259,835 | | | | | | |
| | ME^3 | | | | \$67,500 | | | |
| | | | | | | | | |
| FF&E (Admin Offices) | The Parker Company | \$1,334,372 | | | | | | |
| | Corporate Environments | | | | | \$757,655 | | |
| | | | | | | | | |
| TOTAL | | \$33,604,472 | | \$1,027,437 | | \$8,331,369 | | \$56,544 |
| | | | | | | | | |
| | | | | | | | | |
| TOTALS | | \$988,454,840 | | \$152,461,361 | | \$161,457,997 | | \$42,356,536 |