

GWCCA Campus Development Project Updates

September 16, 2021

Department of Project & Program Management

Today's Agenda

AYIB Pedestrian Mall

AYIB Transportation Depot

FY21 Roofing Replacements

Signia by Hilton

GWCCA & Hilton Sales Offices

Andrew Young International Blvd.

• Pedestrian Mall

• Project Information

- Project Manager: Ken Stockdell
- Project Scope: Extend COP pedestrian experience to GWCC building entrances and eventually leading to GWCCA Hotel. Create a safer pedestrian experience through the GWCCA Campus.
- Project Location: Current sidewalks & traffic lanes along Andrew Young International Blvd from Marietta St. to Centennial Olympic Park Drive.

• Project Status

- Current Phase: Construction
- Construction Schedule: Mid-March – December 2021

• Transportation Depot

• Project Information

- Project Manger: Ken Stockdell
- Project Scope: Create a designated pick-up and drop-off area for all buses and taxi/rideshare vehicles. To improve traffic conditions by minimizing congestion and improving trip times.
- Project location: Current green space between International Plaza and State Farm Drive and current Red Deck Entry & COP Drive.

• Project Status

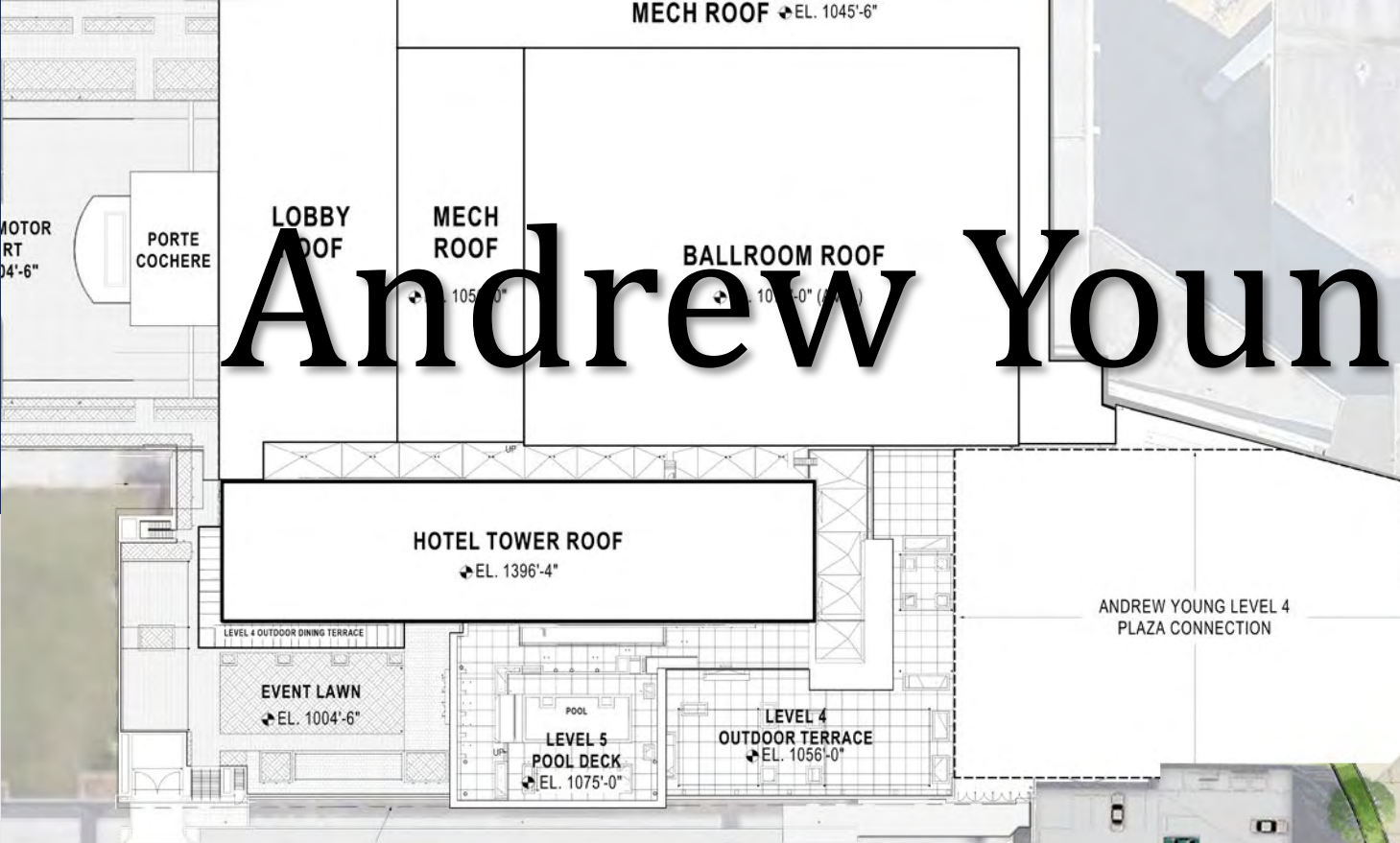
- Current Phase: Construction
- Construction Schedule: April 2021 – April 2022

Andrew Young International Blvd Projects

Pedestrian Mall Site

Transportation
Depot Site

Andrew Young International Blvd Projects



PHASE 2 - REGISTRATION HALL & GATEWAY
8/2/21 - 12/6/21

MECH ROOF ↗ EL. 1045'-6"
MECH ROOF ↗ EL. 1056'-0"
BALLROOM ROOF ↗ EL. 1070'-0" (AVG.)
HOTEL TOWER ROOF ↗ EL. 1396'-4"
LEVEL 4 OUTDOOR TERRACE ↗ EL. 1056'-0"
LEVEL 5 POOL DECK ↗ EL. 1075'-0"
ANDREW YOUNG LEVEL 4 PLAZA CONNECTION

Doors to remain open
Registration Hall doors to be closed during construction
re-looping of asphalt of AYIB to be coordinated with GWCC
Sidewalk access to ramp along CNN
New Two way traffic plan to be implemented during this phase.

LEGEND

- Pedestrian Walkway
- Vehicle Traffic Flow
- Construction Fence
- Work Area
- Temporary Toilets
- Dumpster

MAINTAIN EXISTING RED DECK RAMP ACCESS (CLOSING ENTRY FOR CONSTRUCTION WILL BE COORDINATED WITH EVENT SCHEDULE)

MAINTAIN PEDESTRIAN ACCESS (CLOSING ACCESS FOR CONSTRUCTION DELIVERIES WILL BE COORDINATED WITH EVENT SCHEDULE)

MAINTAIN EXISTING SILVER DECK ACCESS AT ALL TIMES

RAMP DN
OPEN TO BELOW
CONSTRUCTION ENTRANCE
CAUTION CONSTRUCTION IN PROGRESS
CAUTION CONSTRUCTION IN PROGRESS
CAUTION CONSTRUCTION IN PROGRESS
CAUTION CONSTRUCTION IN PROGRESS

LEGEND

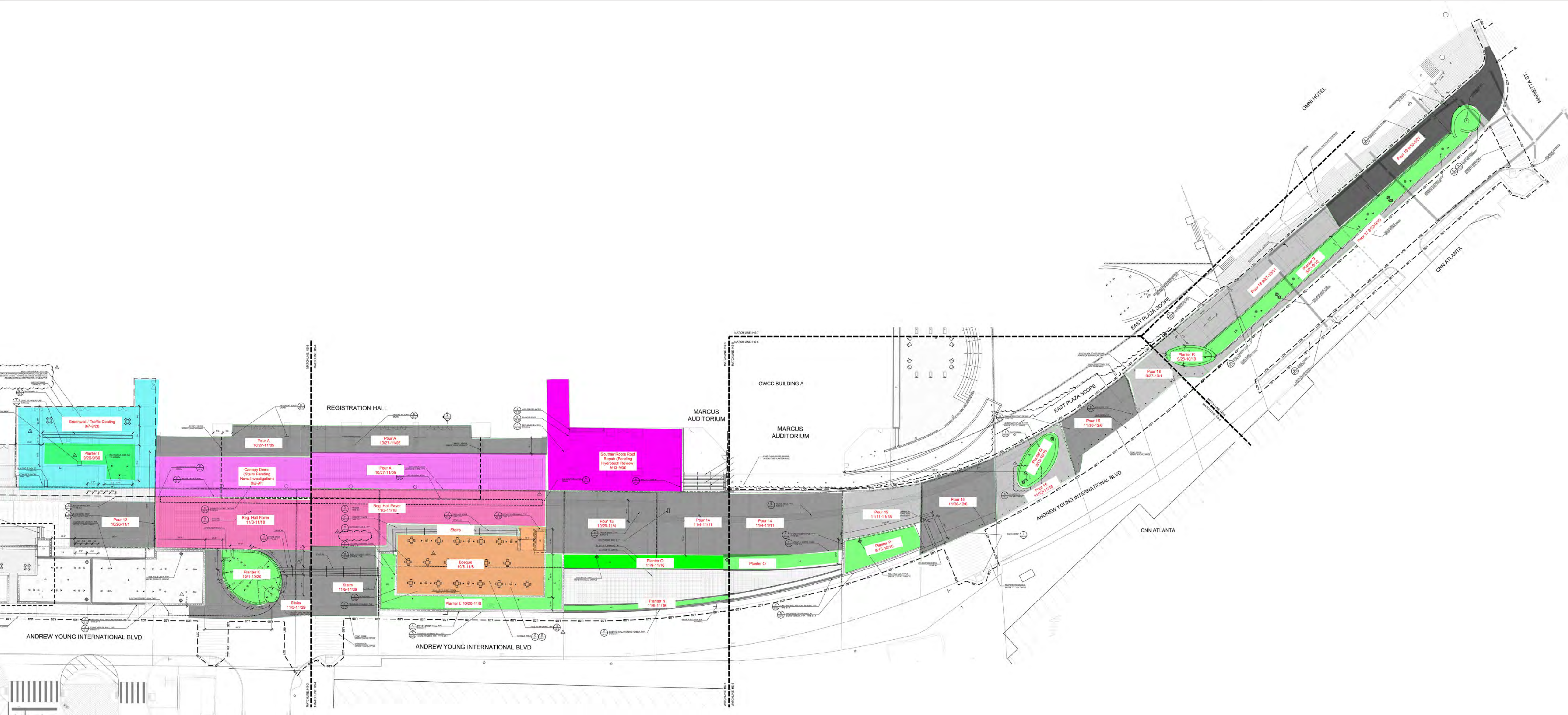
- New Pedestrian & Vehicular Access
- Maintain Existing Pedestrian & Vehicular Corridors
- Construction Fence
- Full Height Fencing / Protection to Protect Railroad Tracks & Vehicles
- Safety Signage & Wayfinding
- Secure Construction Access Gate
- Construction Trailer
- Concrete Wash-Out

1 Coordinate All Construction Traffic & Deliveries with Event Schedule To Maintain A Safe Construction Site
2 Follow all Safety Requirements with Working Above and Adjacent to Railroad Tracks.
3 Maintain Access To Egress Stairs and Adjacent Park Event Space

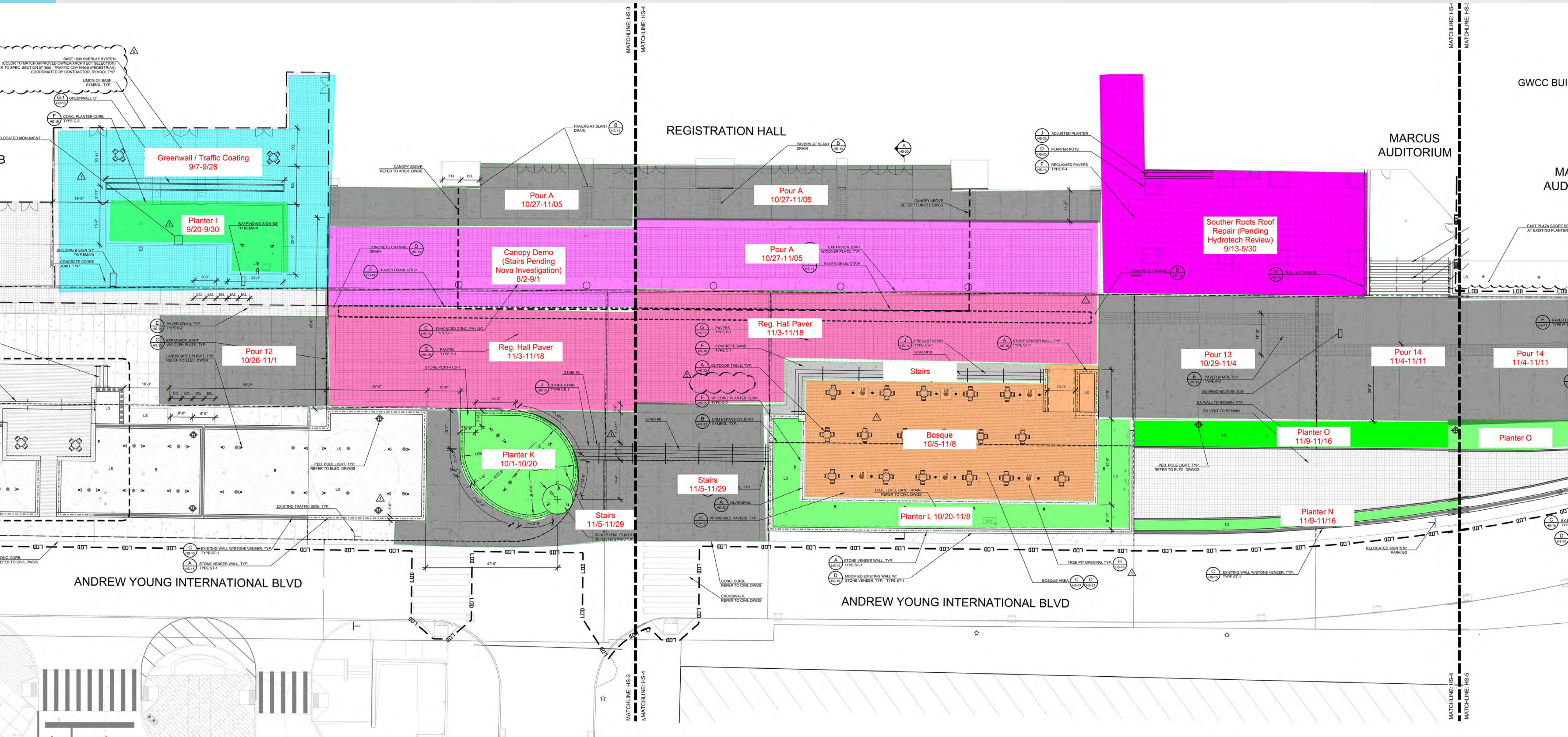
Transportation Depot

4/6/21 – 4/5/22

Pedestrian Mall – Phase 2 Completion Plan



Pedestrian Mall – Phase 2 Completion Plan





Pedestrian Mall – Phase 2 Completion Plan



4-Week Look-Ahead Schedule - Pedestrian Mall

Area	Activity	Start Date	Finish Date
Phase 1	Phase 1 Stone Punchlist	8/30/21	9/27/21
	Landscaping Phase 1 Area	9/27/21	10/27/21
Phase 2	Inspect Existing Waterproofing under Southern Roots (Hall A1 roof)	8/20/21	9/29/21
	Erect Canopy	8/23/21	9/29/21
	Traffic Coating at Green Wall (Flagpole area)	9/8/21	10/11/21
	Planter I	9/20/21	9/30/21
	Prime Canopy	9/21/21	10/11/21
	Detail Canopy	10/7/21	10/27/21
	Install CMU Planter K	9/23/21	10/06/21
	Waterproofing at Planter K	10/7/21	10/15/21
	CMU at Bosque	10/7/21	10/20/21
	Demo Speed Humps	9/8/21	9/14/21
	Underground Storm Drain	9/8/21	9/23/21
	CNN Sidewalk Infill	9/9/21	9/15/21
	Enhanced Concrete Pour 17	9/10/21	9/16/21
	Form/Pour Trench Drain	9/10/21	9/23/21
	Enhanced Concrete Pour 18	9/17/21	9/23/21
	Install CMU Planters P, Q, R	9/24/21	10/4/21
	Footings for Light Poles	9/24/21	10/4/21
	Install Trench Drain	9/24/21	10/7/21
	Iconic Element Foundation	10/5/21	10/6/21
	Waterproofing at Planter P, Q, R	10/5/21	10/11/21
	Enhanced Concrete Pour 19	10/6/21	10/21/21

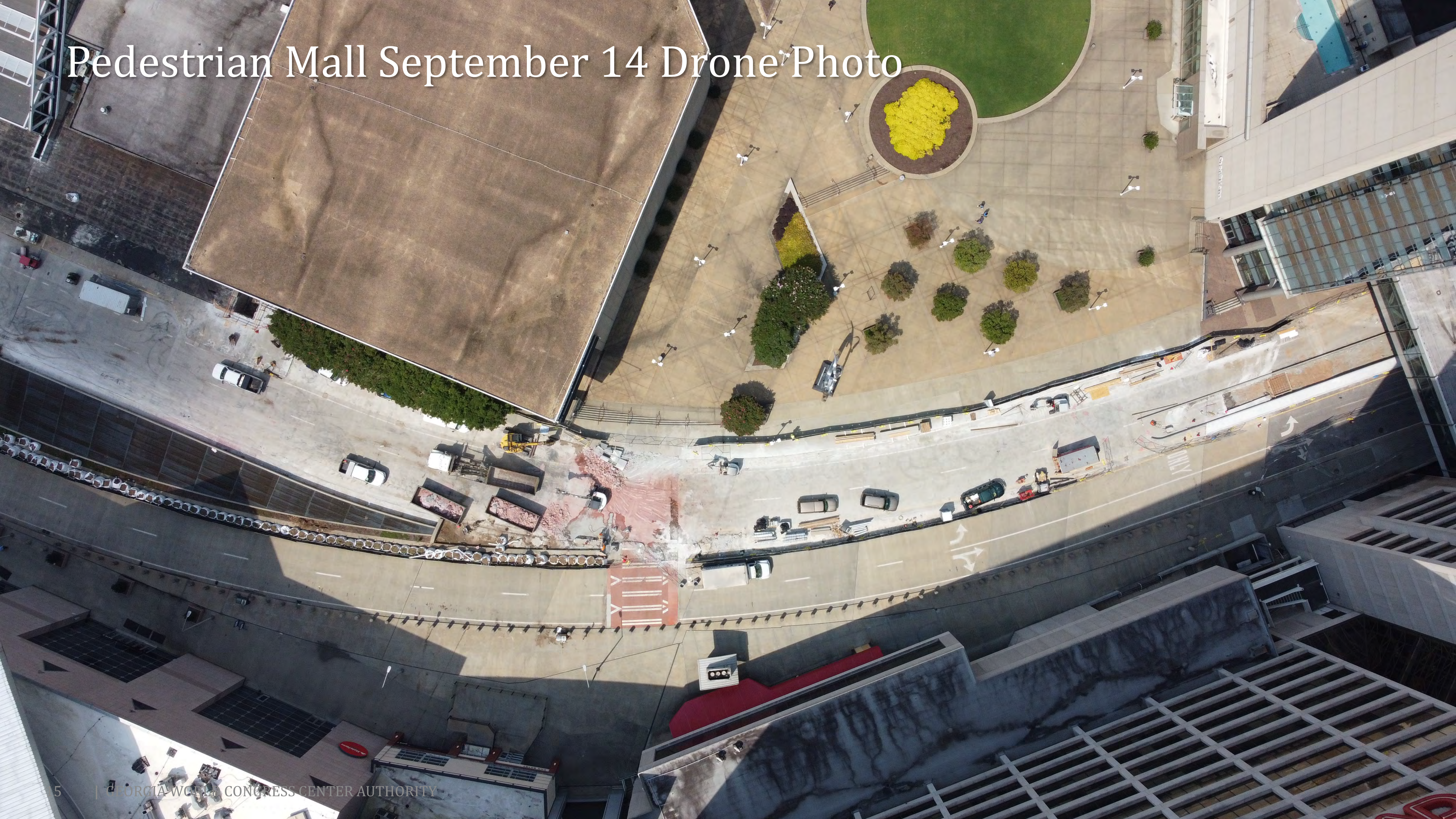
Pedestrian Mall September 14 Drone Photo



Pedestrian Mall September 14 Drone Photo



Pedestrian Mall September 14 Drone Photo



Pedestrian Mall September 14 Drone Photo



Pedestrian Mall September 14 Photos



Pedestrian Mall September 14 Photos



1



2

Pedestrian Mall September 14 Photos



1



2

Pedestrian Mall September 14 Photos



1



2

Pedestrian Mall September 14 Photos



1

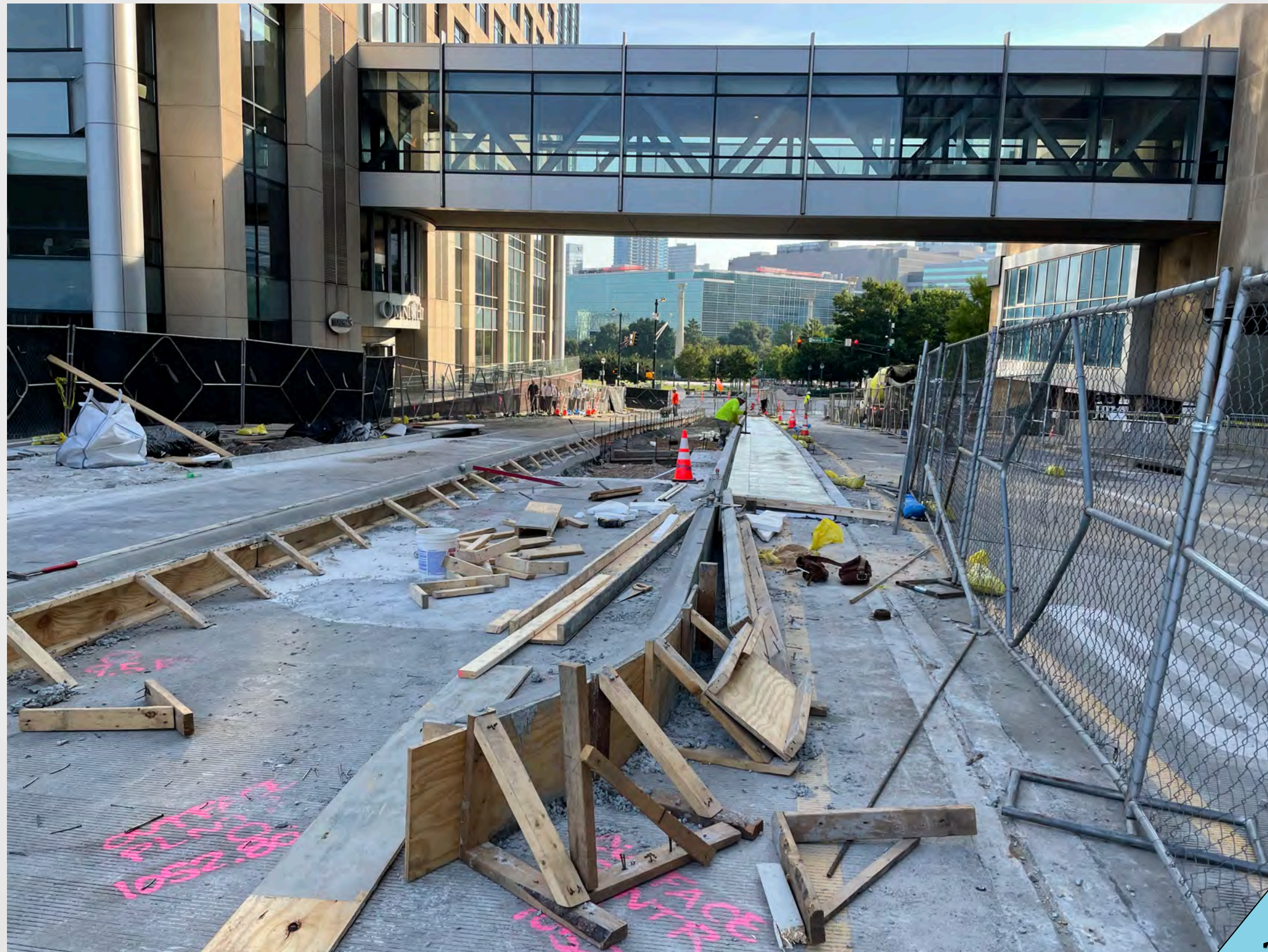


2

Pedestrian Mall September 14 Photos



1



2

Pedestrian Mall September 14 Photos

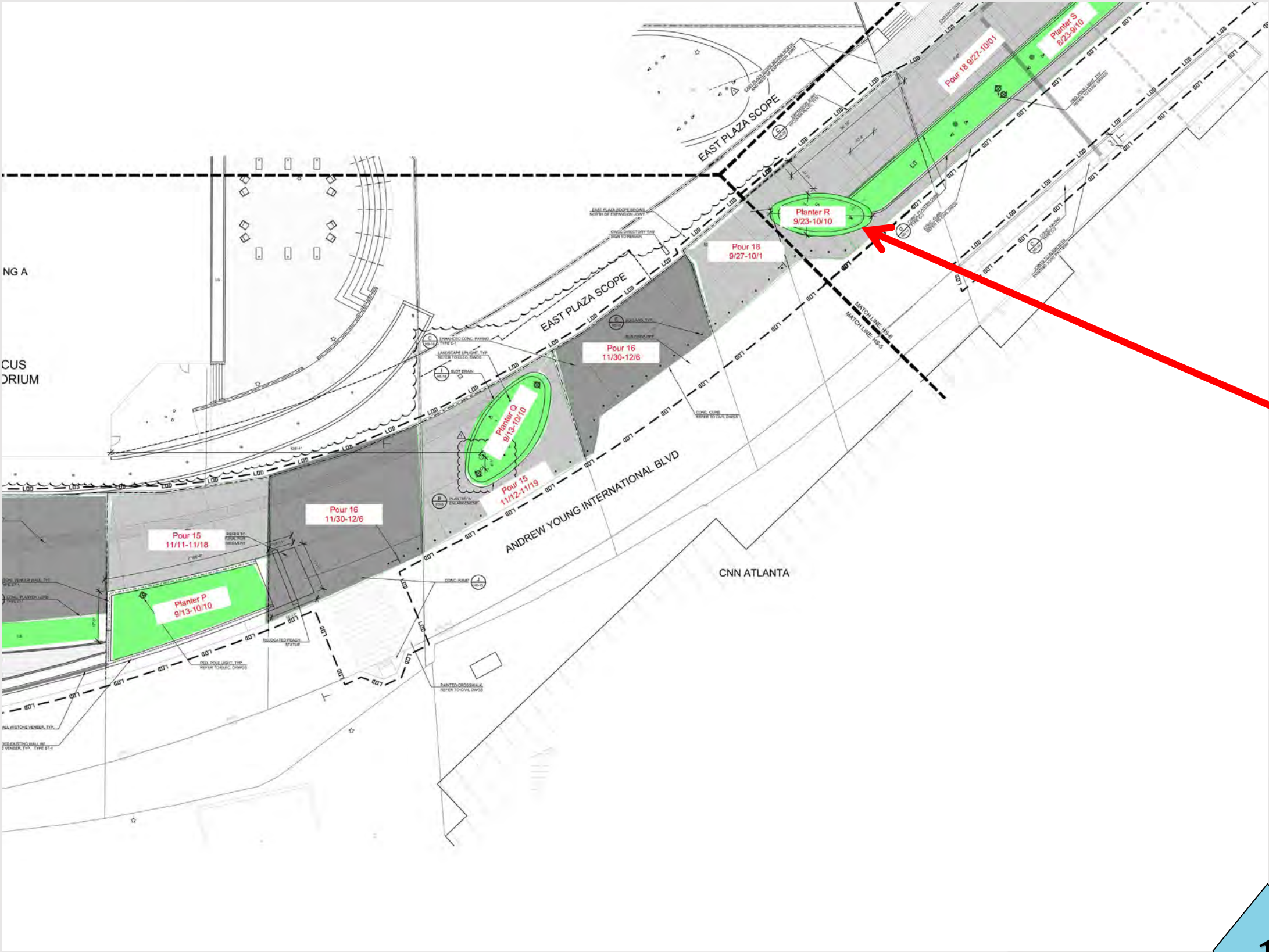


1



2

Pedestrian Mall September 14 Photos



1



2

4-Week Look-Ahead Schedule – Transportation Depot

Area	Activity	Start Date	Finish Date
Depot Area	Coordinate Grind/Chip AYIB Road (Pour #6)	8/11/21	9/16/21
	Grind/Chip AYIB Road (Pour #6)	9/20/21	9/22/21
	Pour Concrete Pour (Pour #6)	9/27/21	9/27/21
	NE Corner Remove Temp Delivery Ramp	9/18/21	9/18/21
	Epoxy Rebar Dowels NW Corner (Pour #5)	9/20/21	9/20/21
	Install Slab Rebar Mat NW Corner (Pour #5)	9/21/21	9/21/21
	Pour Concrete (Pour #5)	9/22/21	9/22/21
	Expansion Joints	8/13/21	11/2/21
	Canopy Steel Install	9/9/21	10/6/21
	Delivery Window #2 Canopy Steel	9/16/21	9/17/21
	Canopy MEP Rough-ins	9/20/21	10/15/21
	Install Canopy Fabric	10/4/21	10/29/21
	Stairs at NE Corner	10/4/21	10/15/21
	Pour #7 (Area at top of stairs from Red Deck)	8/20/21	10/25/21
	Shutdown Red Deck Entry (All lanes)	9/20/21	9/22/21
	Relocate Red Deck Headache Bar/Remove Precast Panel, Cut Precast Panels, Install Carbon Fiber	9/20/21	9/22/21
	Shutdown Red Deck Entry (One lane)	9/23/21	10/7/21
	Shutdown Red Deck Entry (All lanes)	10/15/21	10/15/21
	Structural Repairs Railway Area	10/1/21	11/1/21

4-Week Look-Ahead Schedule – Transportation Depot

Area	Activity	Start Date	Finish Date
Bridge Area	Cut Precast Panel in Front of Steel Truss	9/24/21	9/24/21
Red Deck Area	Pull Wire from Canopy to New Panel	9/20/21	9/24/21
	Pull Wire from Existing Gear to New Panel	10/7/21	10/20/21
South Drive Area	Structural Improvements	5/19/21	10/13/21
	Zone B Install Angles	8/23/21	9/27/21
	Structural Repairs MARTA Area	9/7/21	9/27/21
	Install New Waterproofing/Protection Board	9/9/21	10/25/21
	Install Light Pole Utilities	9/23/21	10/6/21
	Install Geofoam	9/28/21	10/11/21
	Install Irrigation Sleeves	10/5/21	10/11/21
	Install GAB	10/12/21	10/18/21

Transportation Depot September 14 Drone Photo



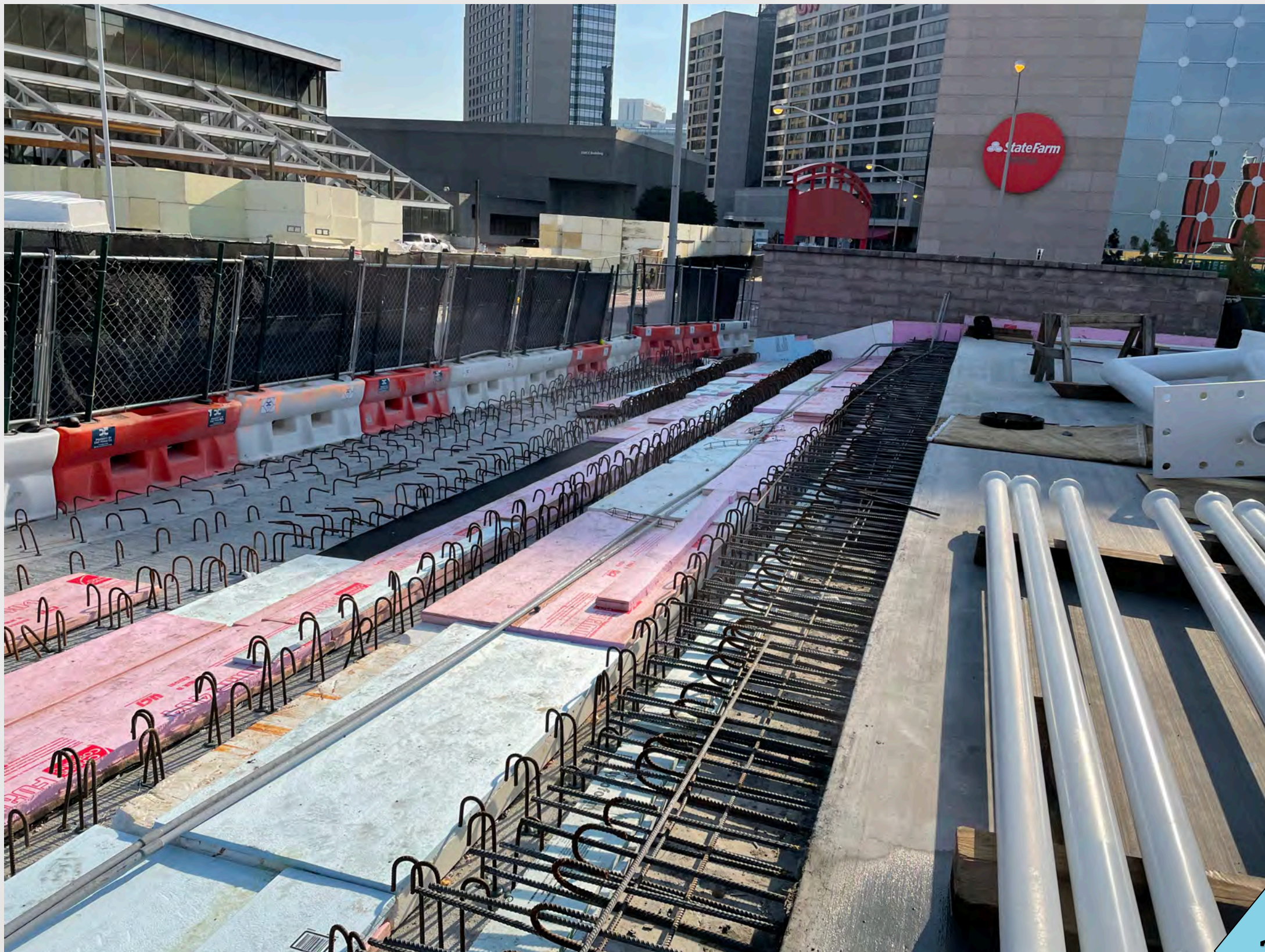
Transportation Depot September 14 Drone Photo



Transportation Depot September 14 Photos



1



2

Transportation Depot September 14 Photos

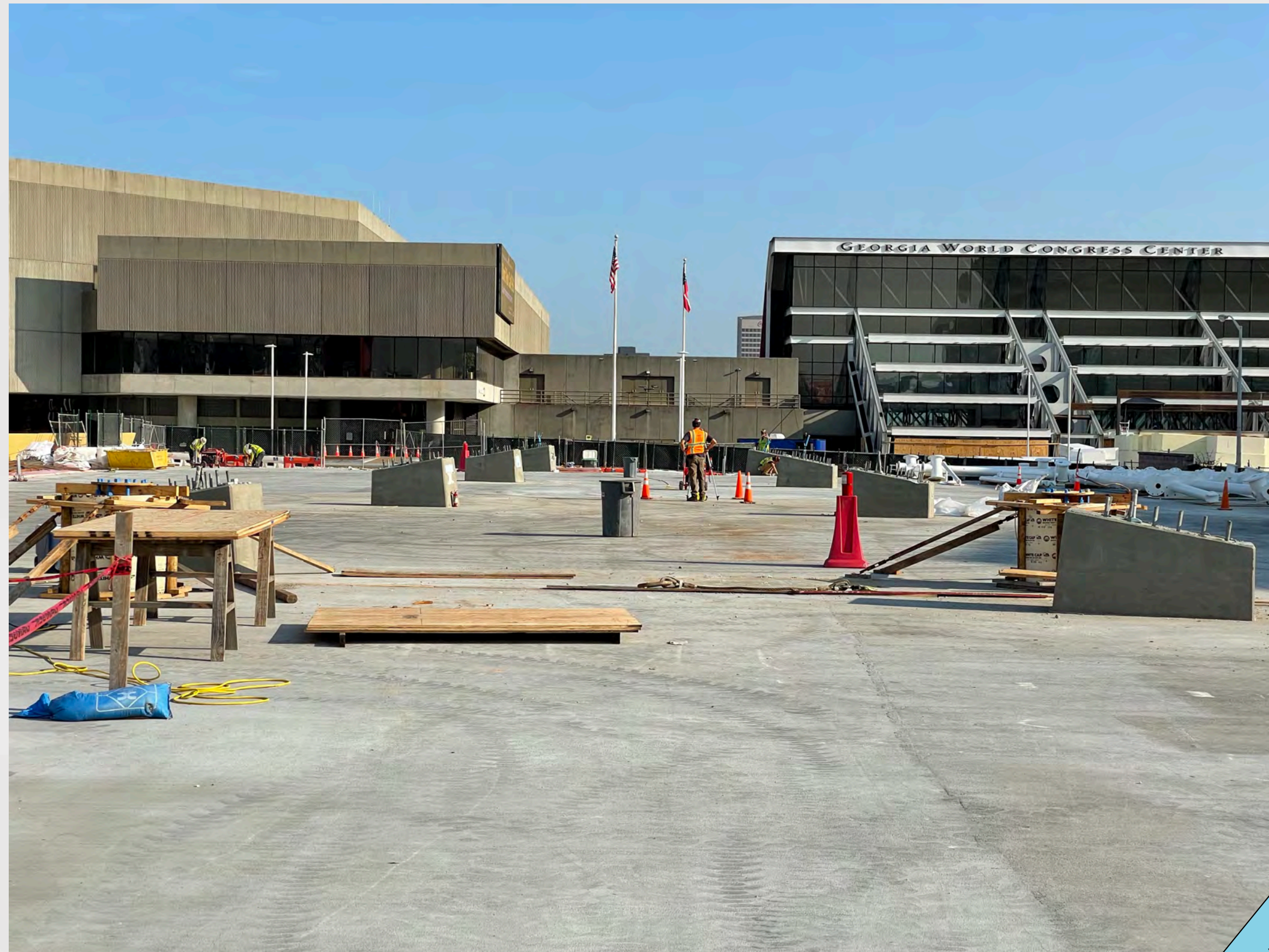


1

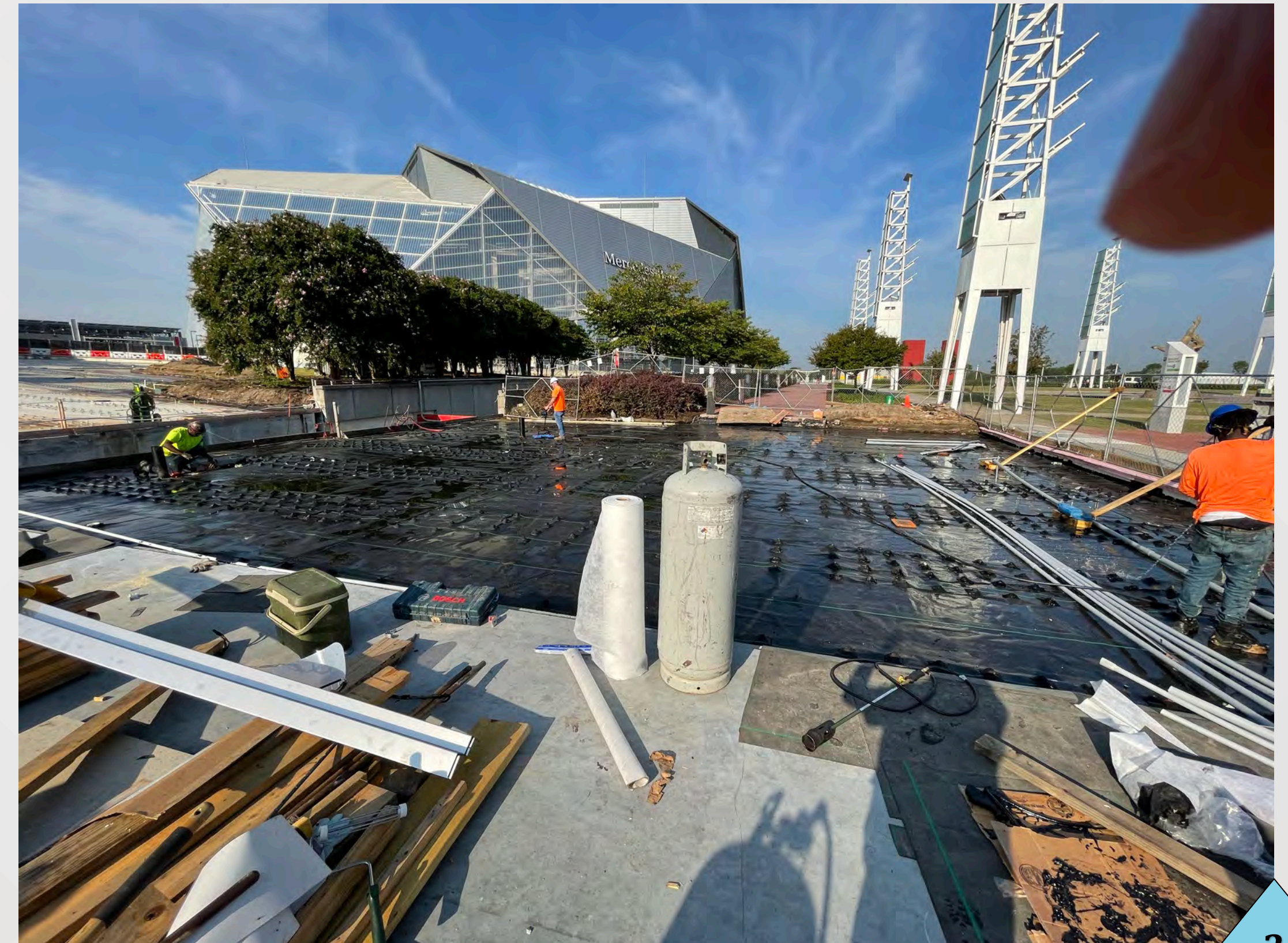


2

Transportation Depot September 14 Photos



1



2

Transportation Depot September 14 Photos



1



2

GWCCA Roof Replacement Project

- Project Information

- Project Manager: Ken Stockdell
- Project Scope: Replacing sections of roof on Buildings A & B classified as in need of “urgent” replacement status.
- Project Location: Sections of Building A & B Roofs

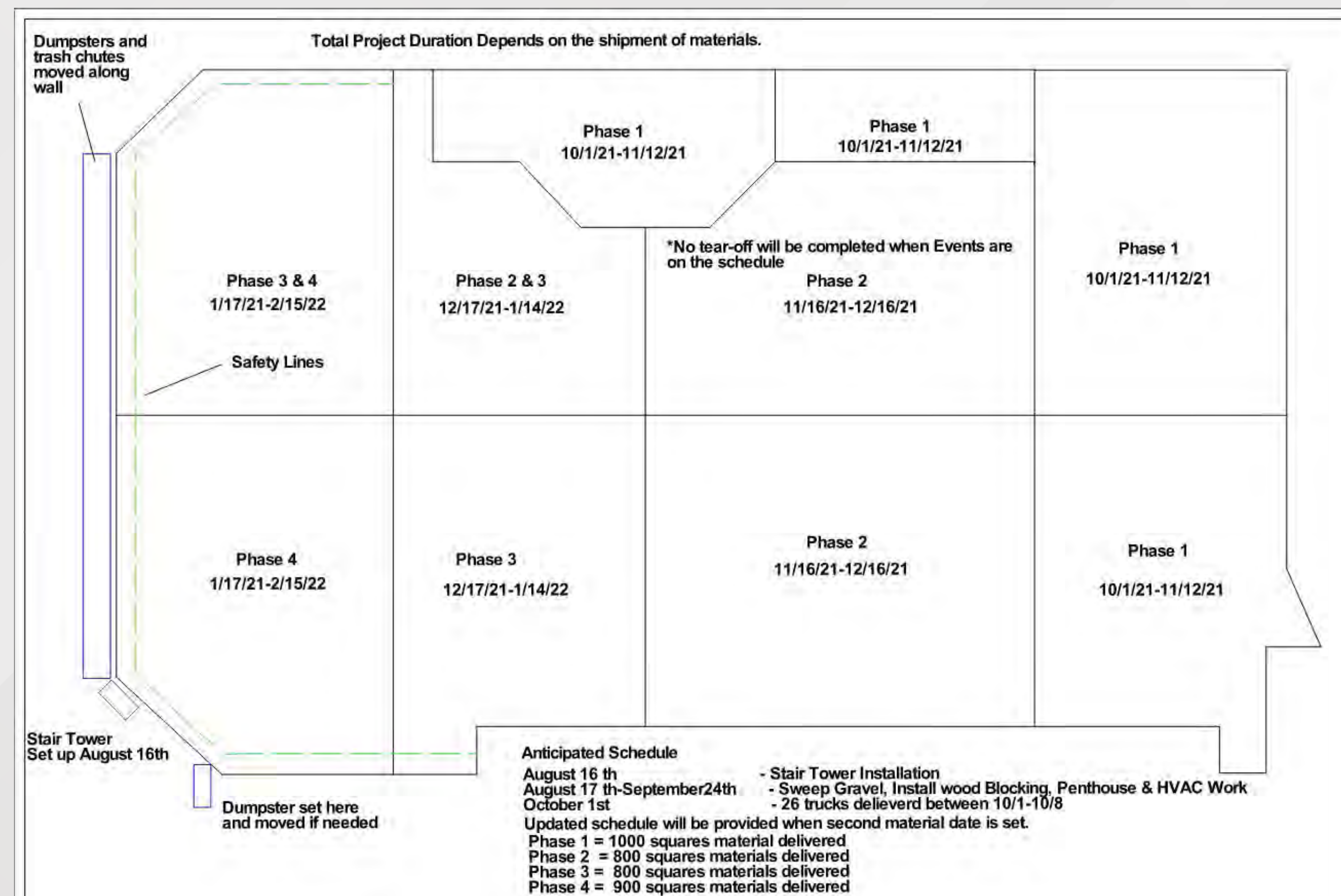
- Project Status

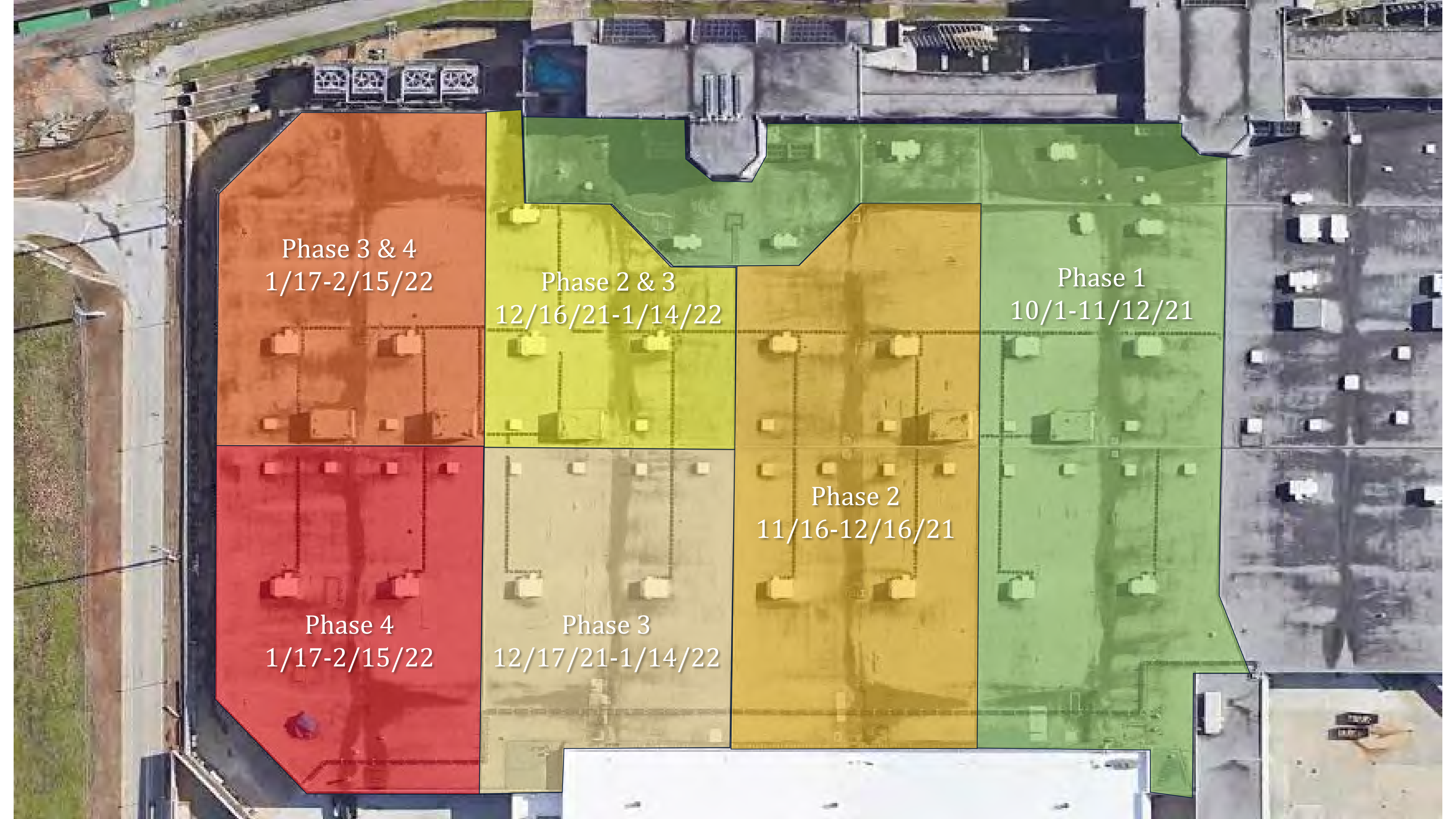
- Current Phase: Design Phase
- Proposed Construction Schedule
 - Design Phase: February 2021 – June 2021
 - Preconstruction/Pricing Phase: June 2021 – August 2021
 - Construction Phase:
 - Phase 1 Halls B4 & B5: August 2021 – February 2022
 - Phases 2-3: TBD

Re-Roofing Process – Priority 1 (Halls B4 – B5)

• Process

- Partial tear-off
 - Remove roofing and protection board
 - Add insulation and new protection board
 - Add roofing membrane
- Two or three crews
- Will work on move-in/move-out days
- No work on event days
 - Rehearsals treated as event days
- No work when 20% rain chance or more
- Tear-off in early morning / new work during the day
- Limit day's work to area that can be completed and water-tight



An aerial photograph of a construction site, likely a large parking lot or industrial area, with several colored overlays indicating different construction phases. The overlays are: a red area in the bottom left, an orange area in the top left, a yellow-green area in the top middle, a tan area in the bottom middle, a mustard yellow area in the middle right, and a green area in the top right and middle right. The site is bordered by a road on the left and a building on the right.

Phase 3 & 4
1/17-2/15/22

Phase 2 & 3
12/16/21-1/14/22

Phase 1
10/1-11/12/21

Phase 4
1/17-2/15/22

Phase 3
12/17/21-1/14/22

Phase 2
11/16-12/16/21

Roofing Project September 14 Drone Photo



Signia by Hilton

- **Project Information**

- Project Manager: Ken Stockdell
- Project Scope: Construct a new 40 story, 975 room luxury hotel that would connect to Building C of the GWCC.
- Project Location: West Plaza & Former Georgia Dome Site

- **Project Status**

- Current Phase: Active Construction
- Construction Schedule: April 2021 – December 2023

Signia by Hilton September 14 Drone Photo



Signia by Hilton September 14 Webcam Photo



Signia by Hilton August 12 Webcam Photo



Signia by Hilton September 14 Webcam Photo



Misc. Hotel Project Items

- Gate 20 Drive Lane Work
 - Currently both lanes accessible to Buildings B & C Loading Docks
 - Contractor finalizing production schedule for remaining utility work
 - Electrical, Water, Gas, and Sanitation
- Temp Wall for “Knuckle” Area
 - Installation for temporary wall started this week
 - Completed by October 19
 - Plastic Covering, Demo & Relocation, Wall Install, Glass Removal
- Other Construction Items
 - 17 of 63 drilled piers/caissons complete in tower area
 - Continued work on micro-piles in Gold Deck area
 - First tower crane installation starts October 18

GWCCA/Hotel Sales Office

- **Project Information**

- Project Manager: Otto Johnson
- Project Scope: Renovation of “Falcons Offices” for GWCCA and Hotel Sales teams and hotel model rooms.
- Project Location: Former “Falcons Offices” in Building C

- **Project Status**

- Current Phase: ACTIVE CONSTRUCTION
- Construction Schedule: June 2021 through October 2021

FLOOR PLAN



AREA 02:
TOTAL AREA: 8,856 SQ FT

Sales Office and Model Room Status

- Sales Office
 - Office completion on schedule for October 1
 - Furniture delivery expected October 29
 - Available for move-in early November
- Model Rooms
 - Final completion except for doors and hardware on October 7
 - Doors and hardware scheduled for completion November 11

Sales Offices September 15 Photos



1



2

Sales Offices September 15 Photos



1



2

Sales Offices September 15 Photos



1



2

Sales Offices September 15 Photos



1



2

Sales Offices September 15 Photos



1



2

Thank you for your continued support in
the development of our campus!

Department of Project & Program Management
September 16, 2021