

GWCCA Campus Development Project Updates

October 14, 2021

Department of Project & Program Management

Today's Agenda

AYIB Pedestrian Mall

AYIB Transportation Depot

FY21 Roofing Replacements

Signia by Hilton

GWCCA & Hilton Sales Offices

Andrew Young International Blvd.

• Pedestrian Mall

• Project Information

- Project Manager: Ken Stockdell
- Project Scope: Extend COP pedestrian experience to GWCC building entrances and eventually leading to GWCCA Hotel. Create a safer pedestrian experience through the GWCCA Campus.
- Project Location: Current sidewalks & traffic lanes along Andrew Young International Blvd from Marietta St. to Centennial Olympic Park Drive.

• Project Status

- Current Phase: Construction
- Construction Schedule: Mid-March – December 2021

• Transportation Depot

• Project Information

- Project Manger: Ken Stockdell
- Project Scope: Create a designated pick-up and drop-off area for all buses and taxi/rideshare vehicles. To improve traffic conditions by minimizing congestion and improving trip times.
- Project location: Current green space between International Plaza and State Farm Drive and current Red Deck Entry & COP Drive.

• Project Status

- Current Phase: Construction
- Construction Schedule: April 2021 – April 2022

Andrew Young International Blvd Projects

Pedestrian Mall Site

Transportation
Depot Site

Andrew Young International Blvd Projects



PHASE 2 - REGISTRATION HALL & GATEWAY
8/2/21 - 12/6/21

MECH ROOF
MECH ROOF
BALLROOM ROOF
HOTEL TOWER ROOF
LEVEL 4 OUTDOOR TERRACE
ANDREW YOUNG LEVEL 4 PLAZA CONNECTION

Doors to remain open
Registration Hall doors to be closed during construction
re-topping of asphalt p of AYB to be coordi with GWCC
Sidewalk access to rem along CMN
New Two way traffic plan to be implemented during this phase

LEGEND

- Pedestrian Walkway
- Vehicle Traffic Flow
- Construction Fence
- Work Area
- Temporary Toilets
- Dumpster

MAINTAIN EXISTING RED DECK RAMP ACCESS (CLOSING ENTRY FOR CONSTRUCTION WILL BE COORDINATED WITH EVENT SCHEDULE)

MAINTAIN PEDESTRIAN ACCESS (CLOSING ACCESS FOR CONSTRUCTION DELIVERIES WILL BE COORDINATED WITH EVENT SCHEDULE)

MAINTAIN EXISTING SILVER DECK ACCESS AT ALL TIMES

RAMP DN
OPEN TO BELOW
CONSTRUCTION ENTRANCE
CAUTION CONSTRUCTION IN PROGRESS
G
1
2
3

LEGEND

- New Pedestrian & Vehicular Access
- Maintain Existing Pedestrian & Vehicular Corridors
- Construction Fence
- Full Height Fencing / Protection to Protect Railroad Tracks & Vehicles
- Safety Signage & Wayfinding
- Secure Construction Access Gate
- Construction Trailer
- Concrete Wash-Out

1 Coordinate All Construction Traffic & Deliveries with Event Schedule To Maintain A Safe Construction Site

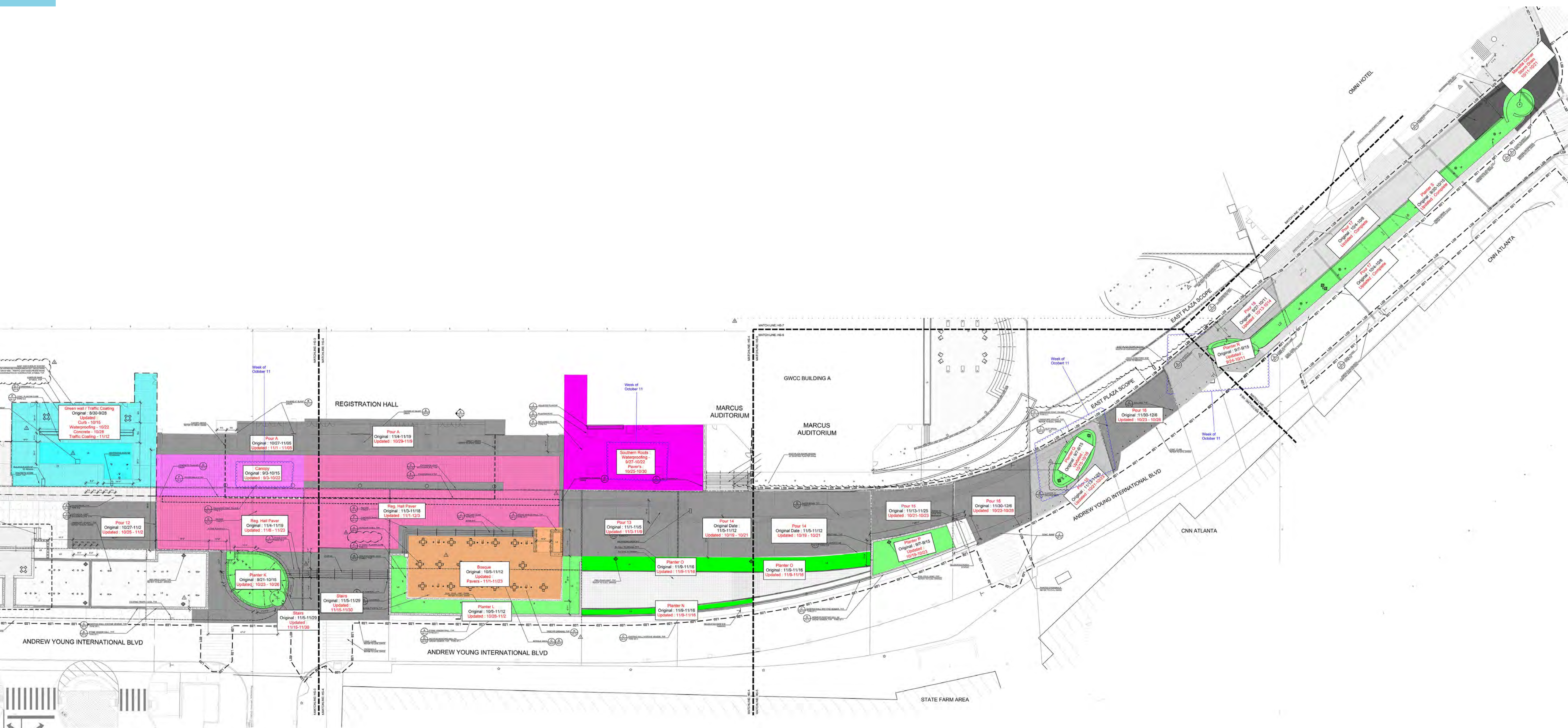
2 Follow all Safety Requirements with Working Above and Adjacent to Railroad Tracks.

3 Maintain Access To Egress Stairs and Adjacent Park Event Space

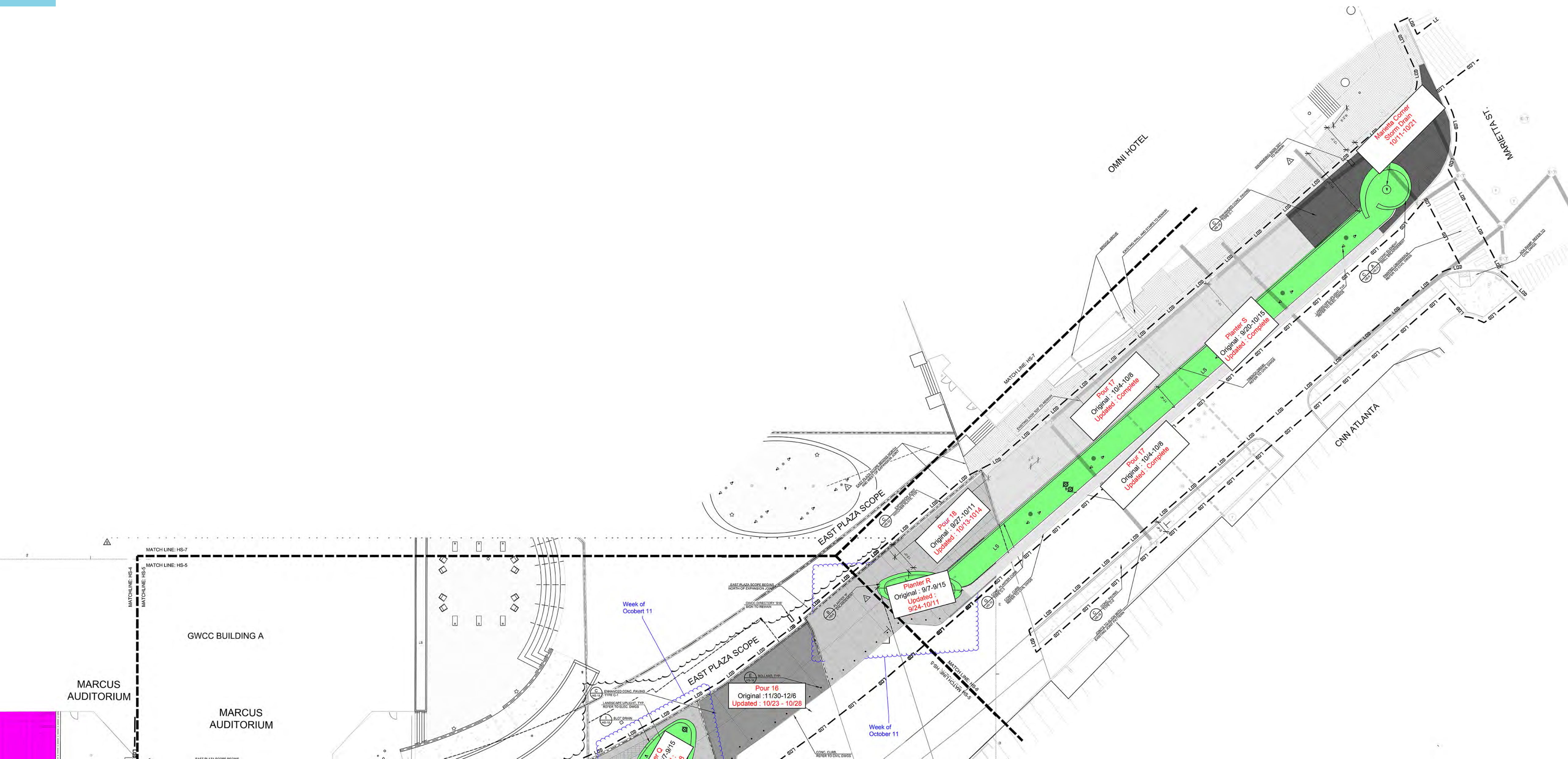
Transportation Depot

4/6/21 – 4/5/22

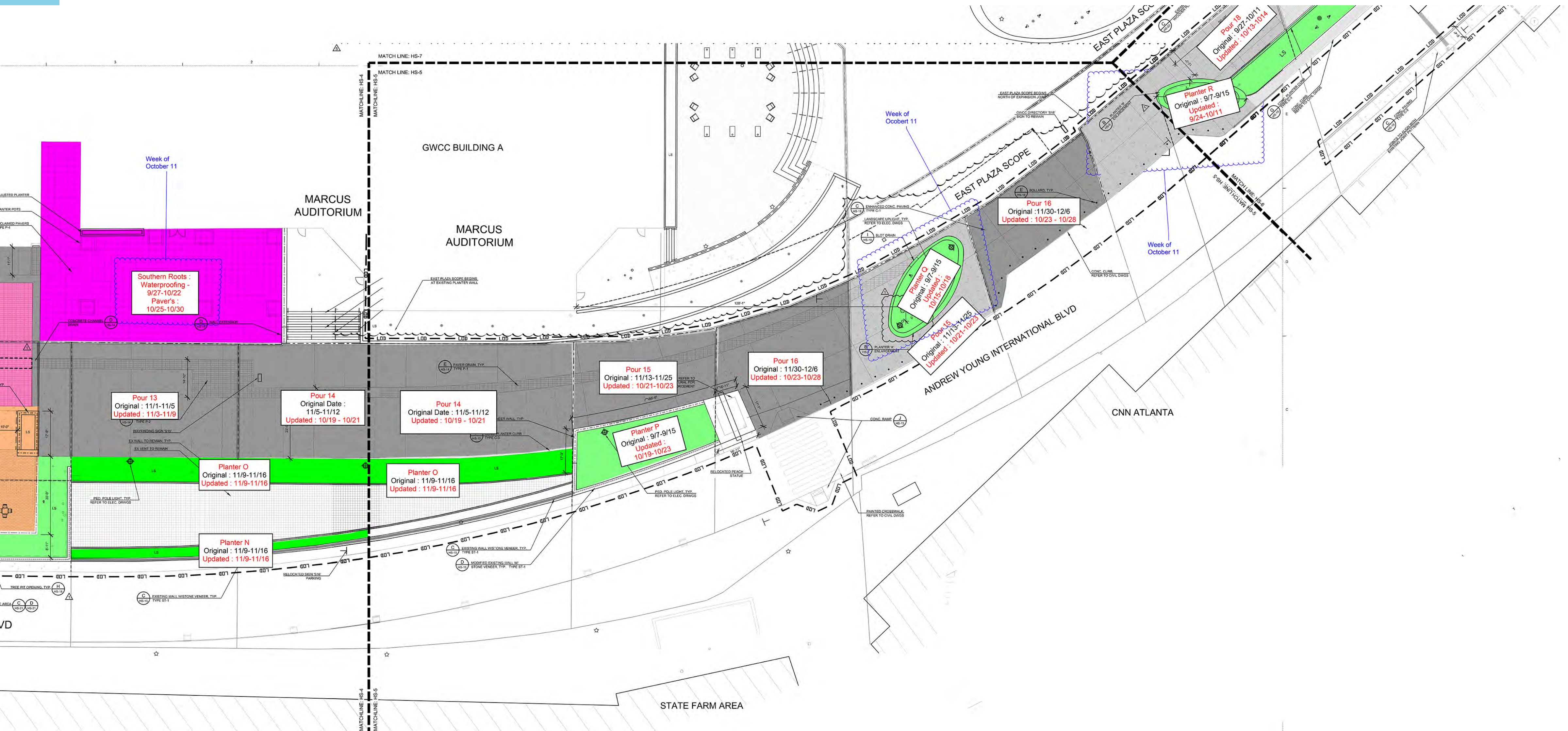
Pedestrian Mall – Phase 2 Completion Plan



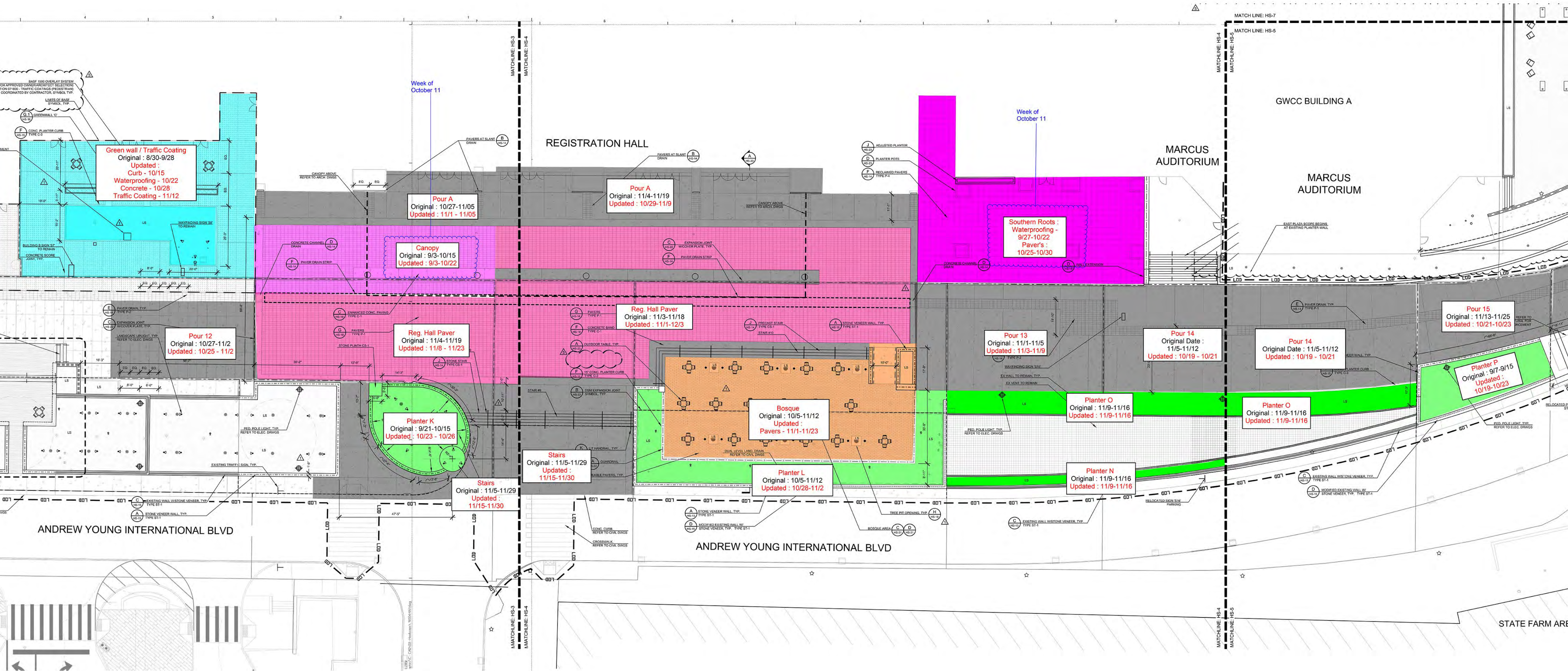
Pedestrian Mall – Phase 2 Completion Plan



Pedestrian Mall – Phase 2 Completion Plan



Pedestrian Mall – Phase 2 Completion Plan



Pedestrian Mall October 13 Drone Photo



Pedestrian Mall October 13 Drone Photo



Pedestrian Mall October 13 Drone Photo



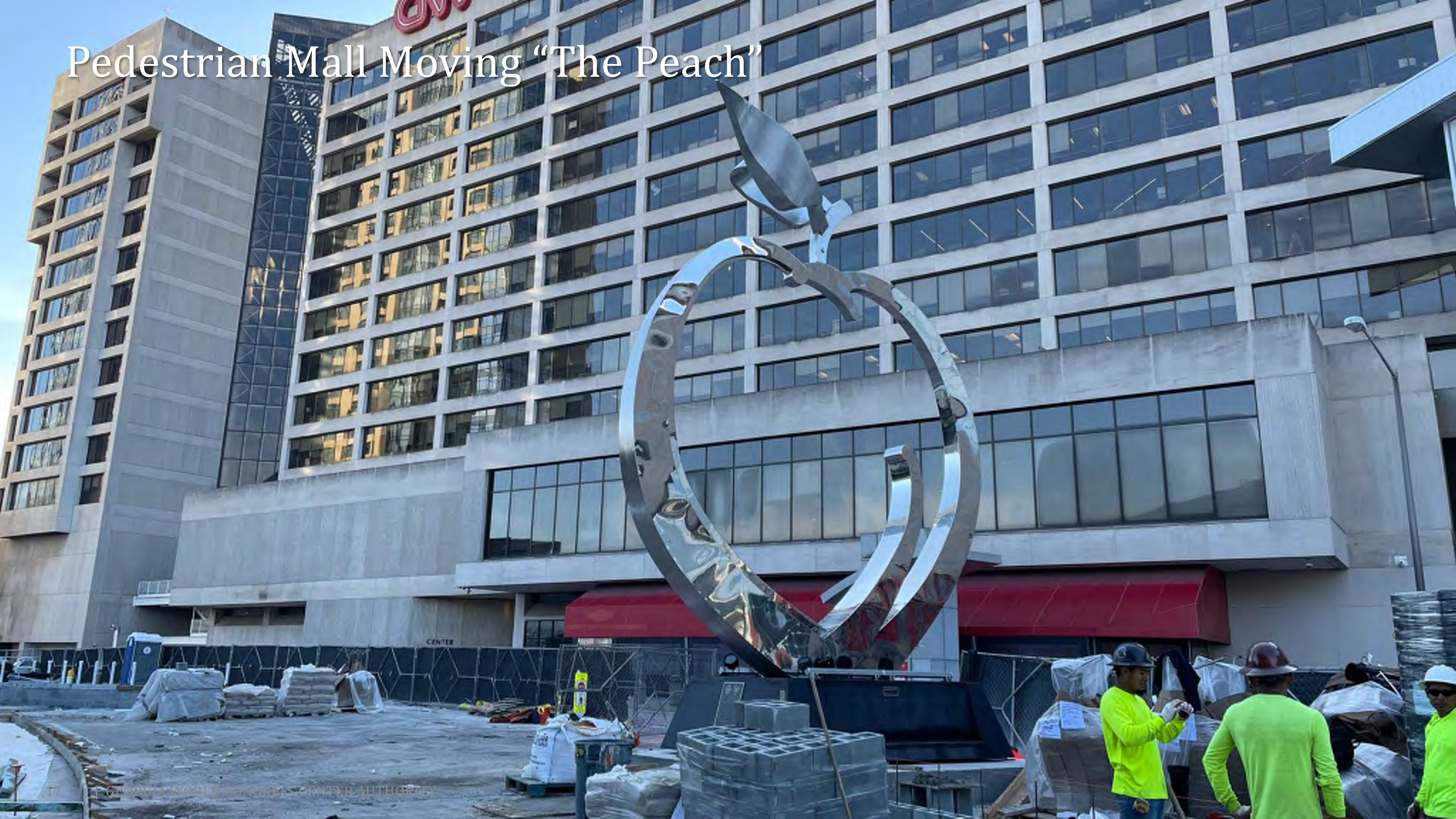
Pedestrian Mall October 13 Drone Photo



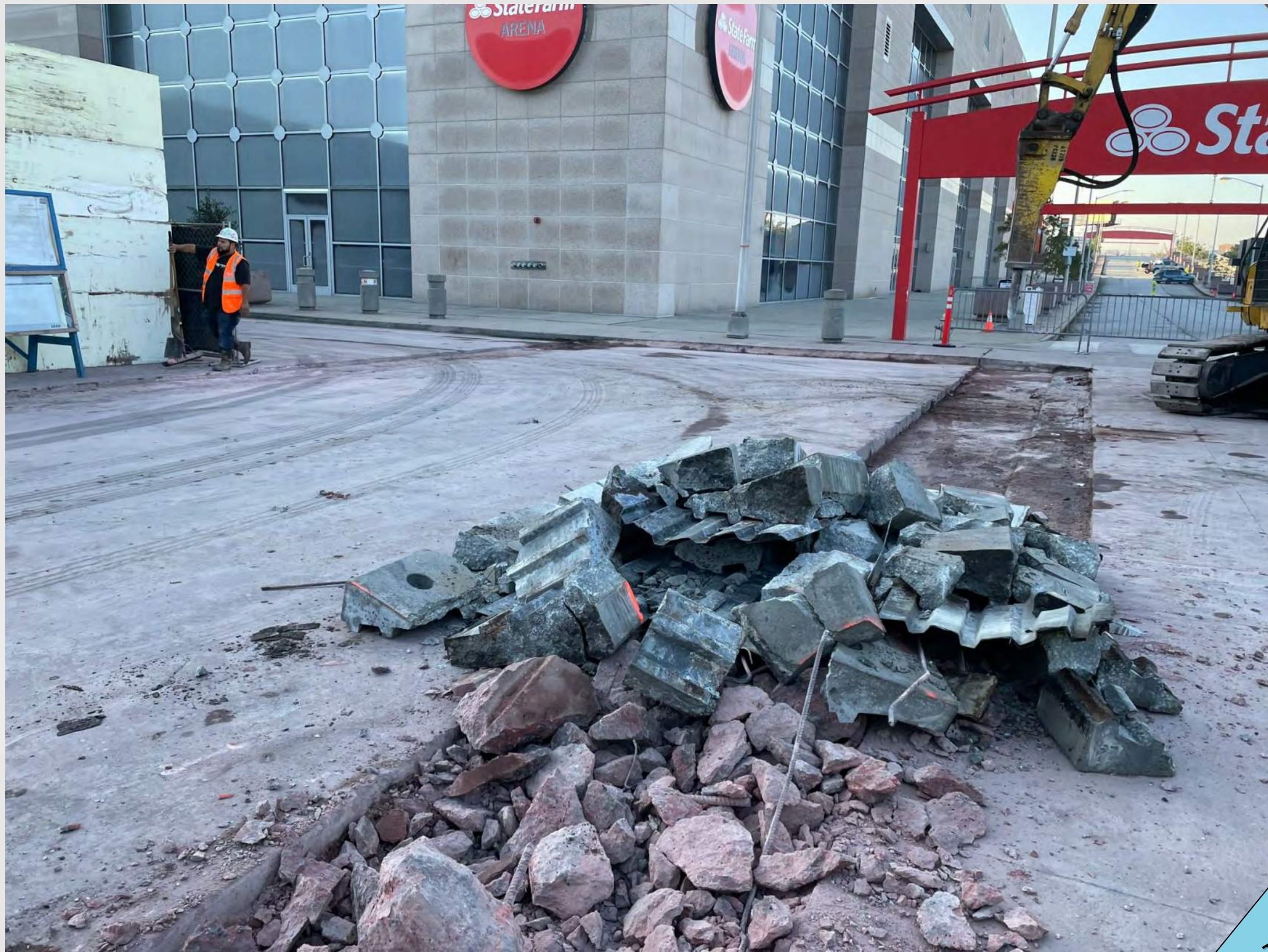
Pedestrian Mall October 13 Drone Photo



Pedestrian Mall Moving “The Peach”



Pedestrian Mall October 12-13 Photos



1

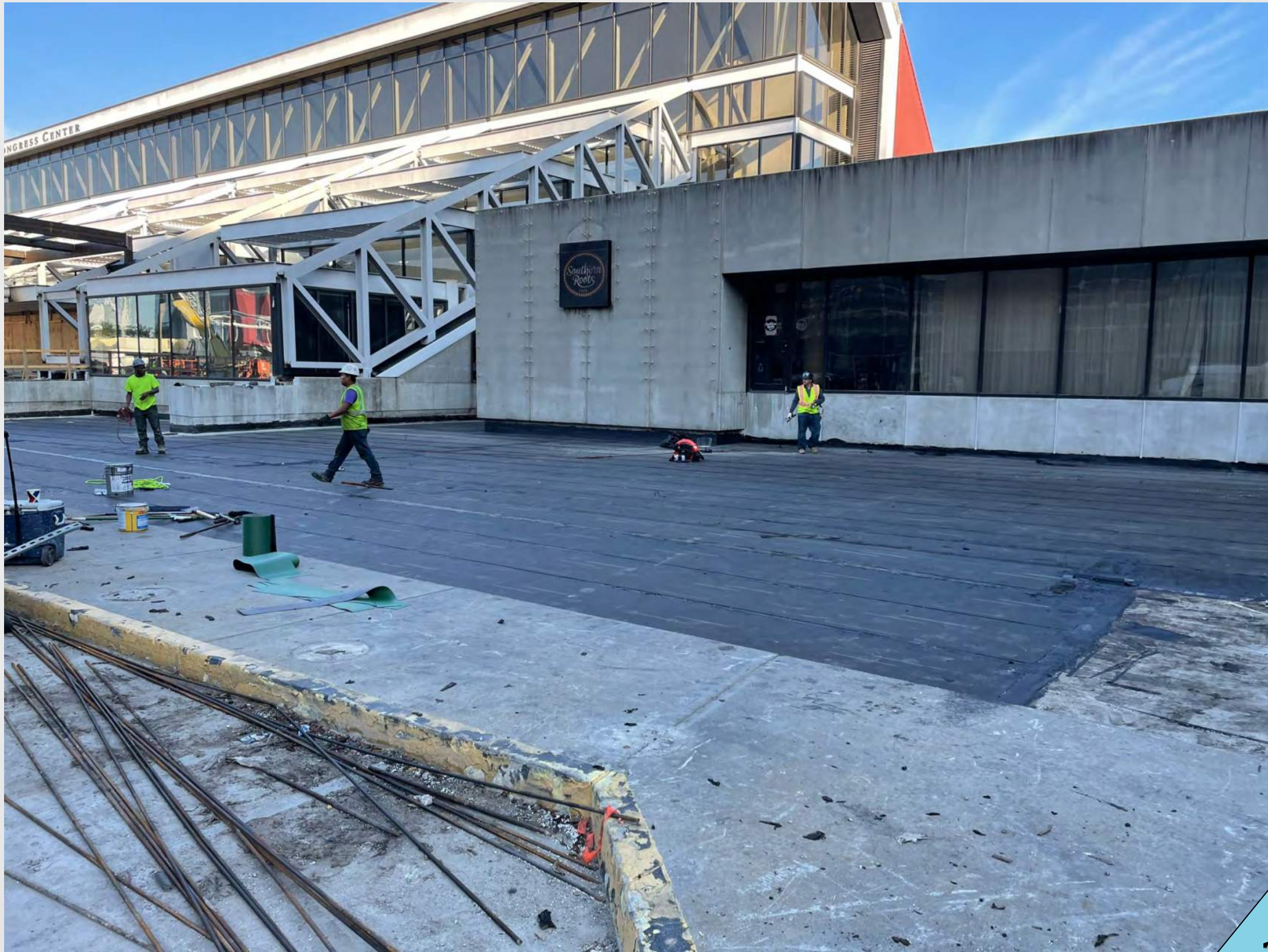


2

Pedestrian Mall October 12-13 Photos



1



2

Pedestrian Mall October 12-13 Photos



1

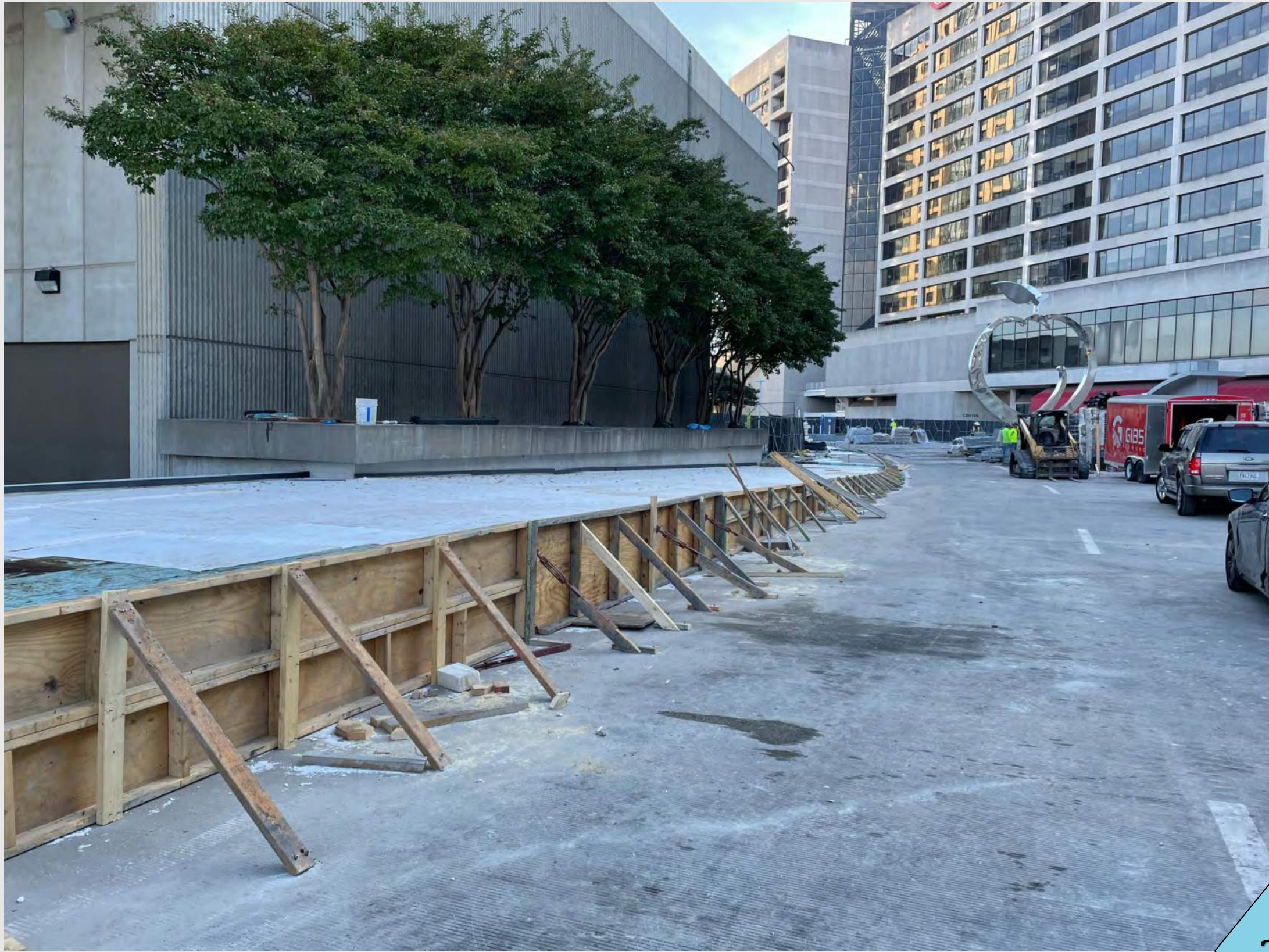


2

Pedestrian Mall October 12-13 Photos



1



2

Pedestrian Mall October 12-13 Photos

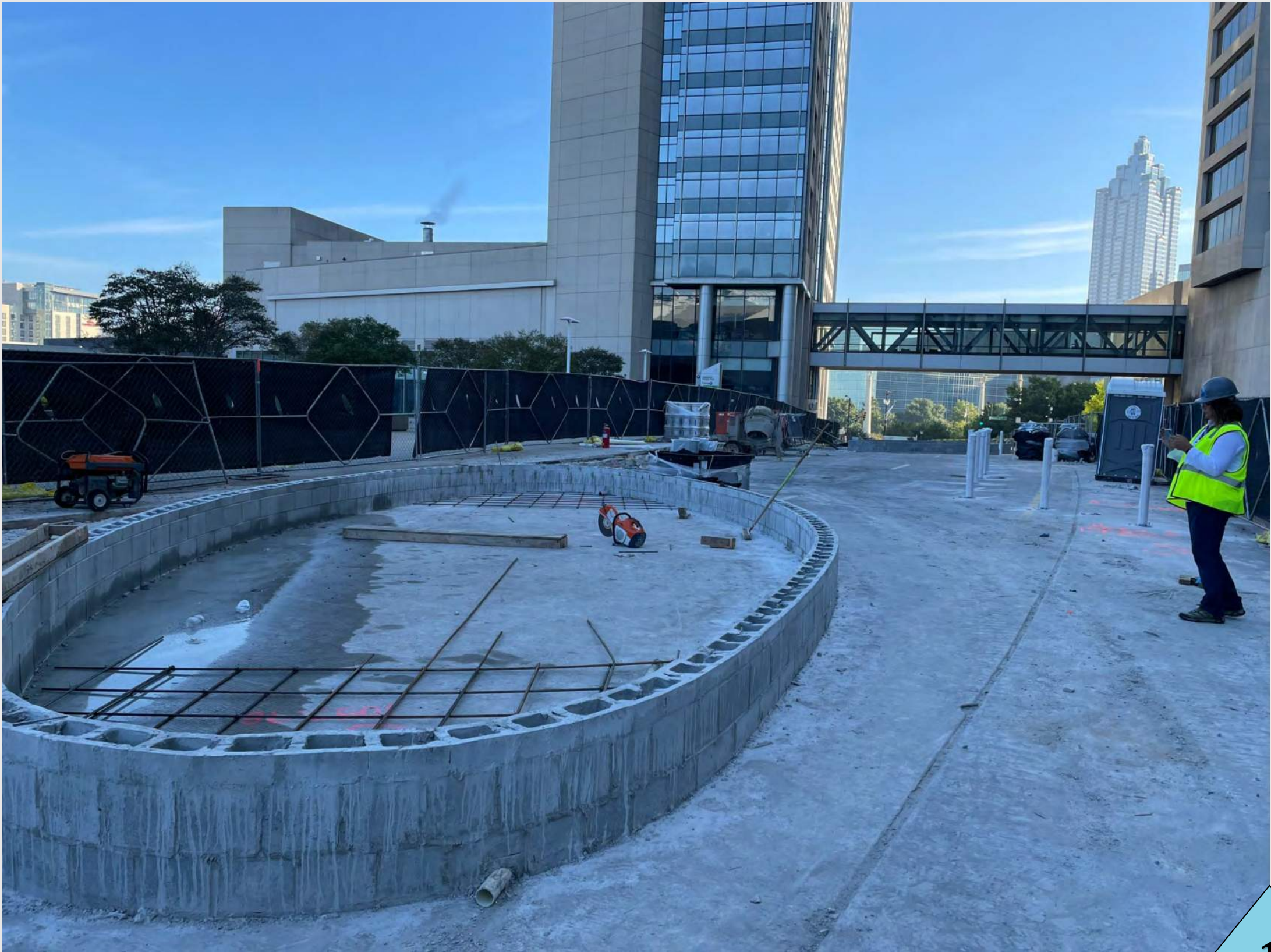


1

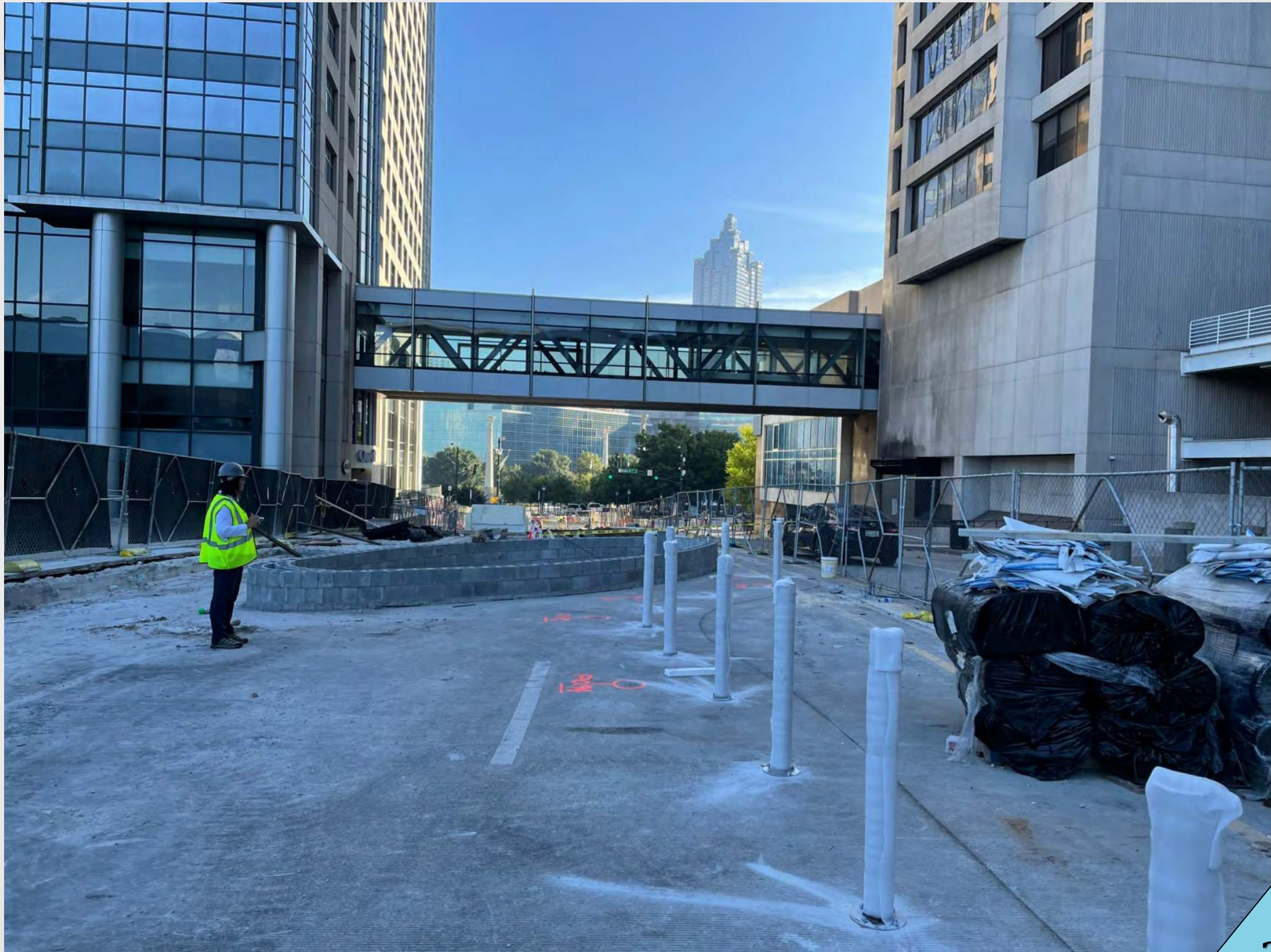


2

Pedestrian Mall October 12-13 Photos



1



2

Pedestrian Mall October 12-13 Photos



1



2

4-Week Look-Ahead Schedule – Transportation Depot

Area	Activity	Start Date	Finish Date
Depot Area	Coordinate Grind/Chip AYIB Road (Pour #6)	8/11/21	10/11/21
	Grind/Chip AYIB Road (Pour #6)	10/12/21	10/14/21
	Pour Concrete Pour (Pour #6)	10/15/21	10/15/21
	Epoxy Rebar Dowels NW Corner (Pour #5)	10/12/21	10/12/21
	Install Slab Rebar Mat NW Corner (Pour #5)	10/12/21	10/13/21
	Pour Concrete (Pour #5)	10/14/21	10/14/21
	Expansion Joints	10/20/21	11/22/21
	Canopy MEP Rough-ins	9/23/21	10/20/21
	Install Canopy Fabric	10/18/21	11/12/21
	Stairs at NE Corner	10/26/21	11/08/21
	Pour #7 (Area at top of stairs from Red Deck)	8/20/21	11/29/21
	Shutdown Red Deck Entry (All lanes)	10/28/21	10/28/21
	Structural Repairs Railway Area	10/18/21	TBD

4-Week Look-Ahead Schedule – Transportation Depot

Area	Activity	Start Date	Finish Date
Bridge Area	Erect Steel Truss	10/25/21	11/5/21
	Grout Steel Truss	11/8/21	11/12/21
	Shutdown Red Deck Entry for Bridge Install	11/15/21	11/15/21
	Erect Steel Bridge/Metal Decking	11/15/21	12/14/21
Red Deck Area	Pull Wire from Existing Gear to New Panel	10/4/21	10/15/21
	Tie-in to Existing Switchgear	10/18/21	10/18/21
South Drive Area	Zone C Final Structural Improvements	8/23/21	10/15/21
	Install New Waterproofing/Protection Board	9/27/21	11/5/21
	Install Light Pole Utilities	10/11/21	10/22/21
	Install Geofoam	10/11/21	10/22/21
	Install Irrigation Sleeves	10/18/21	10/22/21
	Install GAB	10/25/21	10/29/21
	Backfill and Geofoam Outside Roadway	11/1/21	11/12/21
	Install Irrigation	11/15/21	11/19/21

Transportation Depot October 13 Drone Photo



Transportation Depot October 13 Drone Photo



Transportation Depot October 13 Drone Photo



Transportation Depot October 13 Photos



1



2

Transportation Depot October 13 Photos



1



2

Transportation Depot October 13 Photos



1



2

Transportation Depot October 13 Photos



1



2

GWCCA Roof Replacement Project

- **Project Information**

- Project Manager: Ken Stockdell
- Project Scope: Replacing sections of roof on Buildings A & B classified as in need of “urgent” replacement status.
- Project Location: Sections of Building A & B Roofs

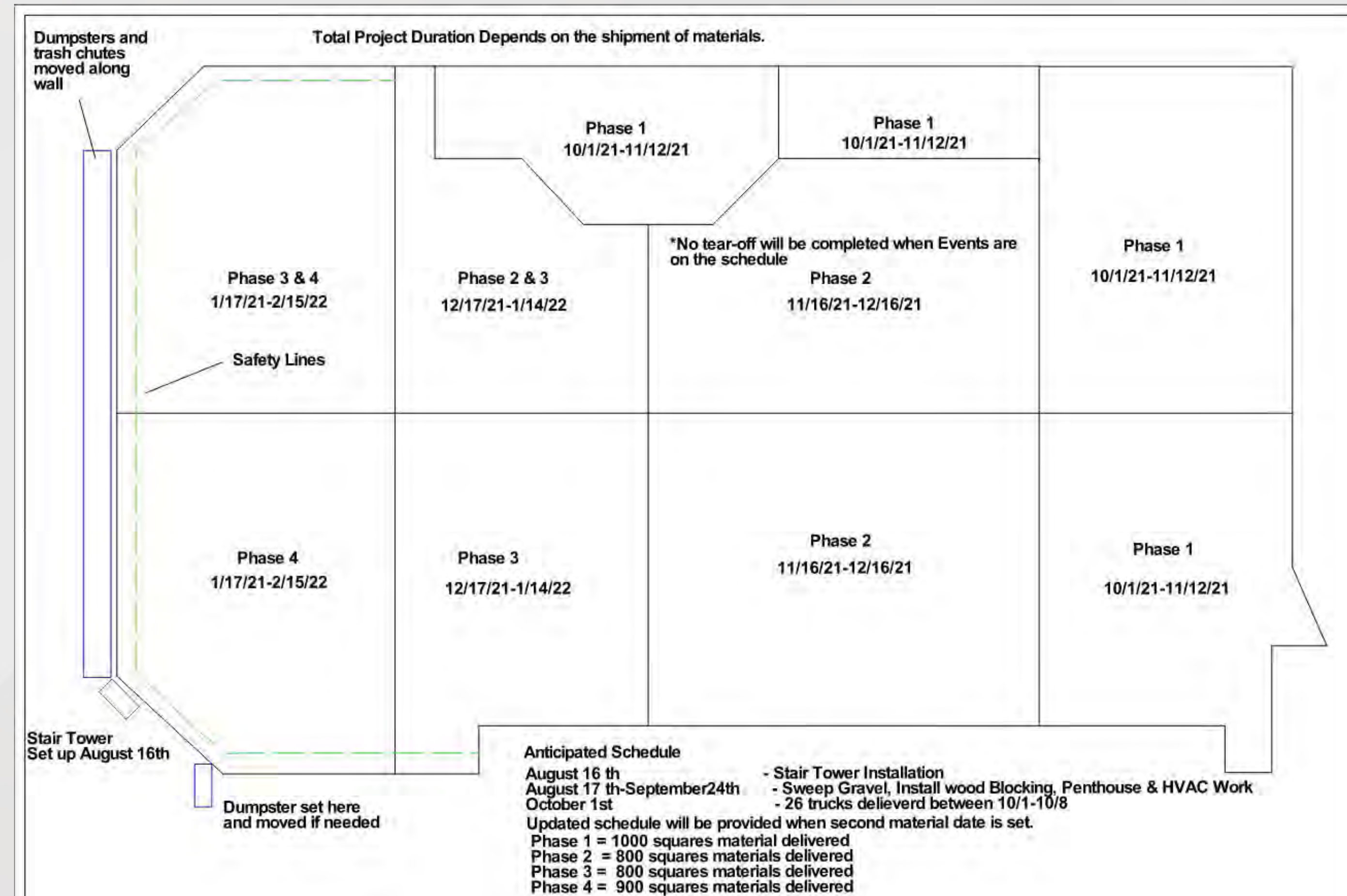
- **Project Status**

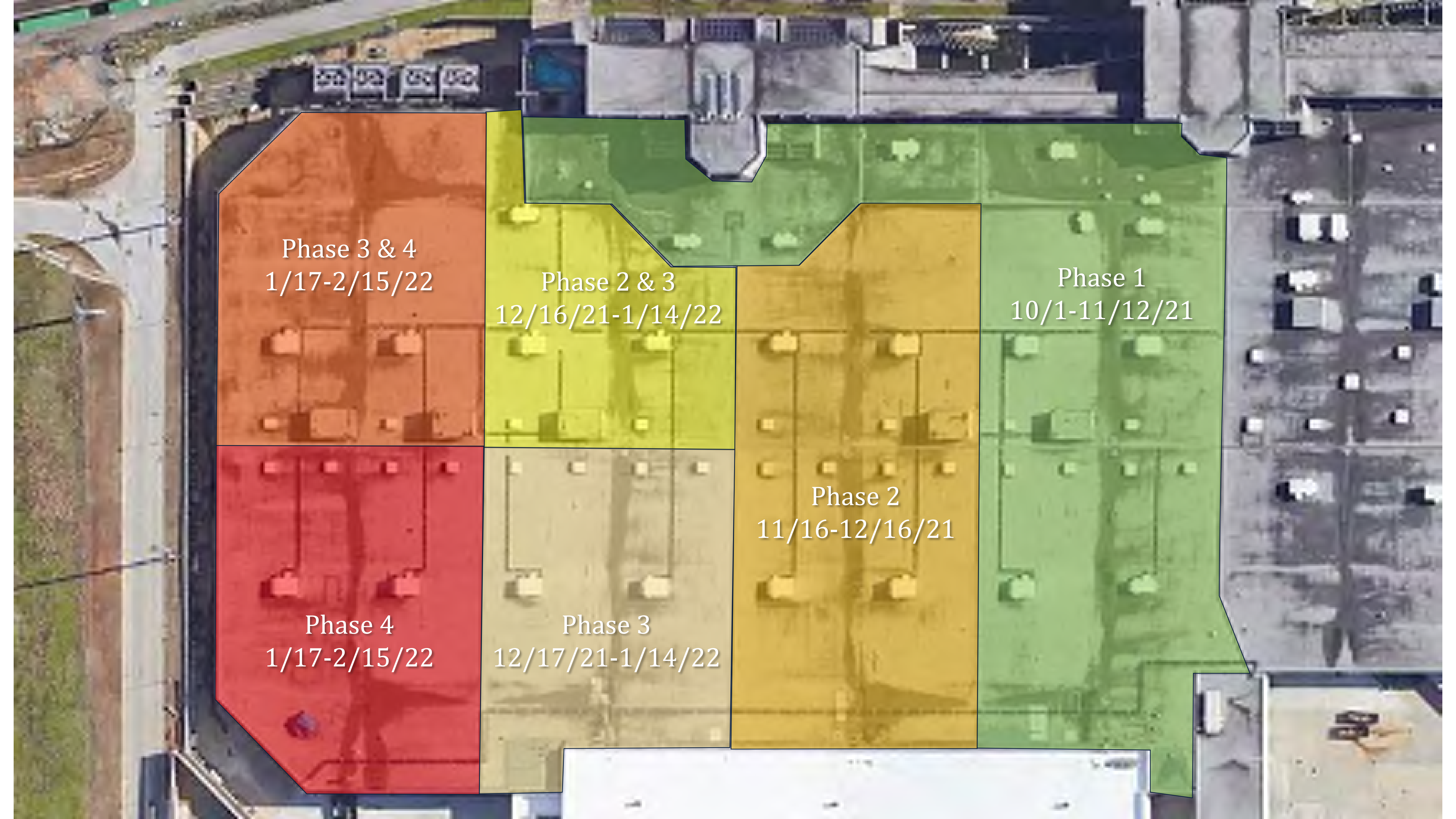
- Current Phase: Design Phase
- Proposed Construction Schedule
 - Design Phase: February 2021 – June 2021
 - Preconstruction/Pricing Phase: June 2021 – August 2021
 - Construction Phase:
 - Phase 1 Halls B4 & B5: August 2021 – February 2022
 - Phases 2-3: TBD

Re-Roofing Process – Priority 1 (Halls B4 – B5)

• Process

- Partial tear-off
 - Remove roofing and protection board
 - Add insulation and new protection board
 - Add roofing membrane
- Two or three crews
- Will work on move-in/move-out days
- No work on event days
 - Rehearsals treated as event days
- No work when 20% rain chance or more
- Tear-off in early morning / new work during the day
- Limit day's work to area that can be completed and water-tight





Phase 3 & 4
1/17-2/15/22

The image is an aerial photograph of a large, irregularly shaped development site. The site is divided into several colored regions, each representing a different phase of construction. The colors are: orange (top left), red (bottom left), yellow-green (top middle), tan (bottom middle), gold (middle right), and green (top right and bottom right). The site is surrounded by other buildings and parking lots. The text labels for each phase are placed within their respective colored regions.

Phase 2 & 3
12/16/21-1/14/22

Phase 1
10/1-11/12/21

Phase 2
11/16-12/16/21

Phase 4
1/17-2/15/22

Phase 3
12/17/21-1/14/22

Roofing Project October 13 Drone Photo



Re-roofing October 14 Photos



1



2

Re-roofing October 14 Photos



1



2

Signia by Hilton

- **Project Information**

- Project Manager: Ken Stockdell
- Project Scope: Construct a new 40 story, 975 room luxury hotel that would connect to Building C of the GWCC.
- Project Location: West Plaza & Former Georgia Dome Site

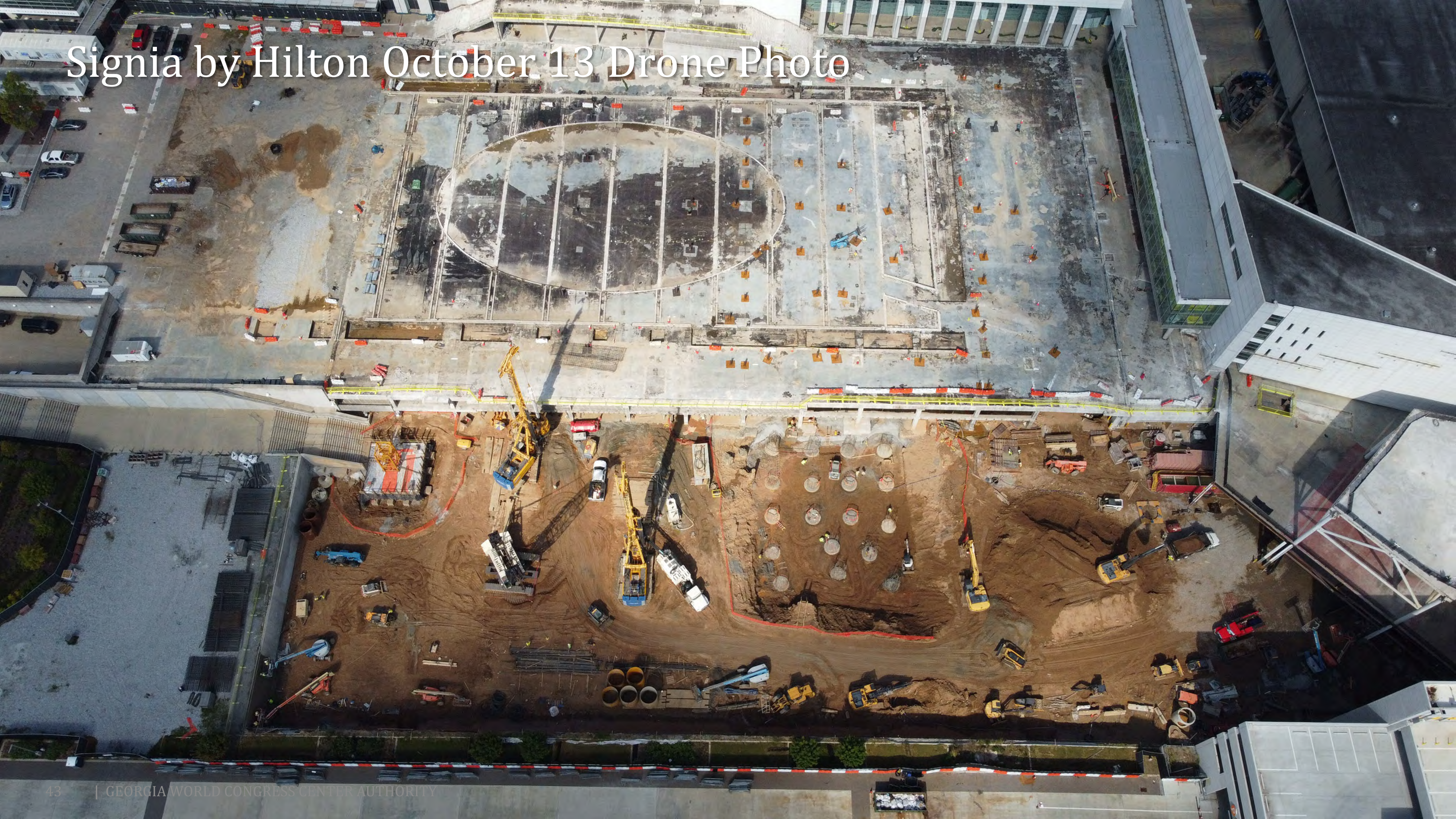
- **Project Status**

- Current Phase: Active Construction
- Construction Schedule: April 2021 – December 2023

4-Week Look-Ahead Schedule – Signia by Hilton

Area	Activity	Start Date	Finish Date
Podium A - Demolition - GOLD DECK / West Plaza	Demo Level 04 GWCC East Side (AYB)	8/11/21	10/11/21
	Grind/Chip AYIB Road (Pour #6)	10/12/21	10/14/21
Site Work	Exterior Site Utilities - GP Perm Power	7/1/21	10/8/21
	Removal of Contaminated Water - TBD	8/5/21	10/25/21
	Exterior Site Utilities - Gas Line	9/22/21	10/19/21
	Exterior Site Utilities - Storm / Sewer	10/12/21	11/8/21
Podium A - Foundations	Existing Gold Deck - Rehabilitation of CIP/Strengthening Work	6/1/21	11/12/21
	Install Production Micropiles in Parking Deck	9/2/21	10/29/21
Podium B - Deep Foundations / Earth Retention	Shotcrete Wall – Waterproofing	8/23/21	10/12/21
	Existing Building Retention - Caisson Shoring - West - (PH-PR)	9/22/21	10/5/21
	Caissons/Drilled Piers – West – (PH-PR)	10/6/21	10/25/21
	Shotcrete Wall – Final Coat	10/13/21	11/9/21
Auger Cast Pile Re-sequence	Auger Cast Piles – Mob 2 – Sequence 1	10/11/21	10/22/21
	Auger Cast Piles – Mob 2 – Sequence 2	10/25/21	11/05/21
Podium B – Shallow Foundations	F/R/P – Core Mat/Elevator – East (PA-PH)	10/6/21	10/19/21
	F/R/P – Tower Crane 2 Footings – East (PA-PH)	10/11/21	10/19/21

Signia by Hilton October 13 Drone Photo



Signia by Hilton October 13 Drone Photo



Signia by Hilton October 13 Webcam Photo



Signia by Hilton October 13 Webcam Photo



Misc. Hotel Project Items

- Gate 20 Drive Lane Work
 - Currently both lanes accessible to Buildings B & C Loading Docks
 - Contractor finalizing production schedule for remaining utility work
 - Electrical, Water, Gas, and Sanitation
- Temp Wall for “Knuckle” Area
 - Installation for temporary wall started this week
 - Completed by October 19
 - Plastic Covering, Demo & Relocation, Wall Install, Glass Removal
- Other Construction Items
 - 17 of 63 drilled piers/caissons complete in tower area
 - Continued work on micro-piles in Gold Deck area
 - First tower crane installation starts October 18

GWCCA/Hotel Sales Office

- **Project Information**

- Project Manager: Otto Johnson
- Project Scope: Renovation of “Falcons Offices” for GWCCA and Hotel Sales teams and hotel model rooms.
- Project Location: Former “Falcons Offices” in Building C

- **Project Status**

- Current Phase: ACTIVE CONSTRUCTION
- Construction Schedule: June 2021 through October 2021

FLOOR PLAN



AREA 02:
TOTAL AREA: 8,856 SQ FT

Sales Office and Model Room Status

- Sales Office
 - Furniture installation October 22-30
 - Available for move-in early November
- Model Rooms
 - Final completion now on October 29
 - One exception: doors and hardware for one door type will complete by 11/20/21

Sales Offices October 13 Photos



1



2

Sales Offices October 13 Photos



1



2

Sales Offices October 13 Photos



1



2

Sales Offices October 13 Photos



1



2

Sales Offices October 13 Photos



1



2

Thank you for your continued support in
the development of our campus!

Department of Project & Program Management
October 14, 2021